

BLIGHT TO MIGHT - RE-UTILISATION OF DISUSED GRAVING DOCKS FOR USE AS MASS PRODUCTION AQUAPONIC FACILITIES

With the shipbuilding industry continually diminishing in the Western world following significant moves to the East, the number of disused multi-billion dollar graving dock complexes continues to rise – subsequently resulting in their demise and dereliction.

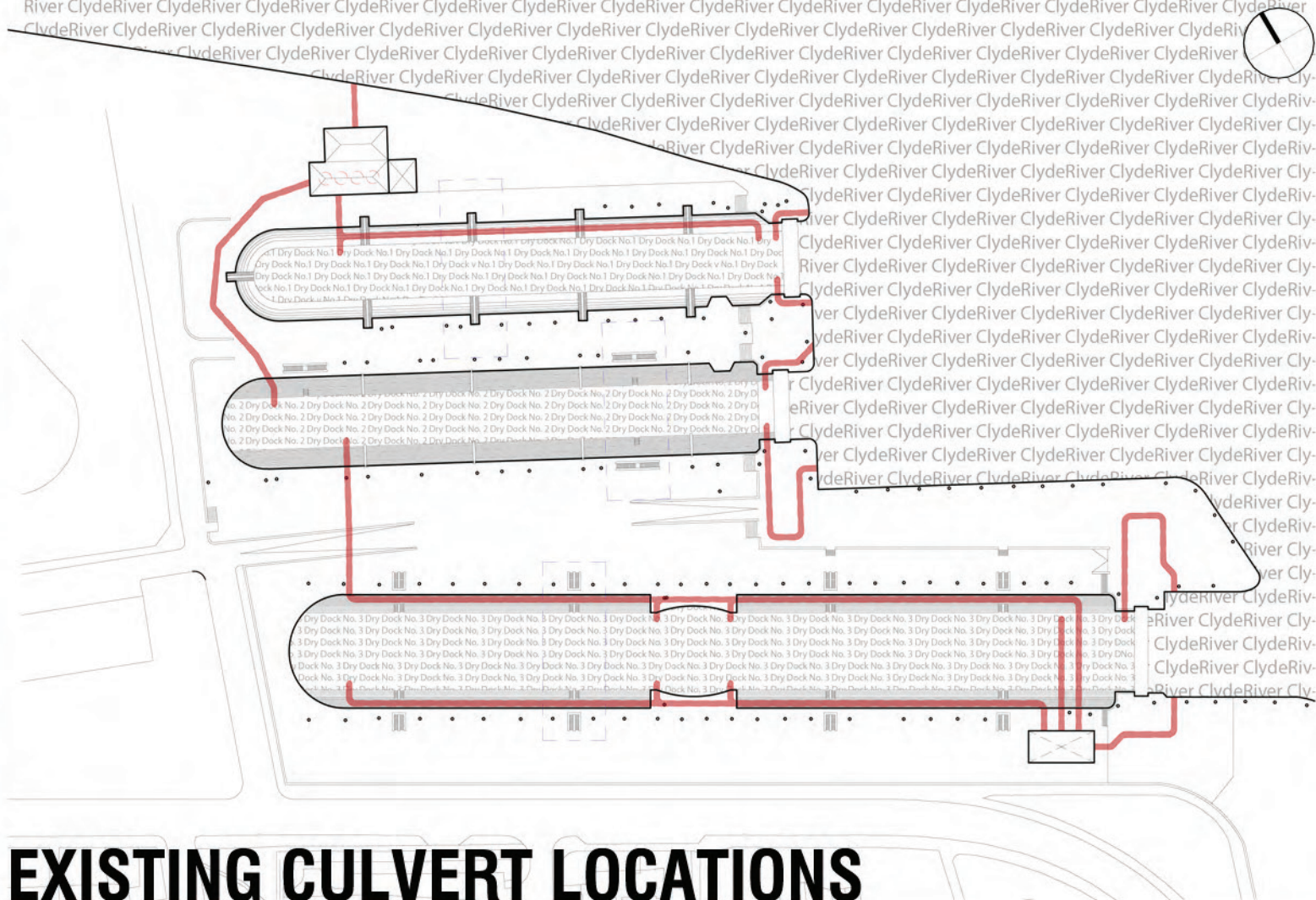
Often overlooked are the inherent structural and mechanical abilities of graving docks facilities - as well as the economic benefits afforded by their locations - namely the following:

- An ability to hold and move vast quantities of water;
- Larger-than-average aquaponic growth areas (when compared to facilities reusing existing buildings);
- Located on water for barge transportation of produced goods;
- Located within communities typically requiring economic assistance;
- Typically located close to road and/or rail networks, and;
- Typically have existing buildings which through reuse can house processing, storage and market facilities.

This ability to move and hold water is something which should be harnessed and used to counter the problem of massive food waste – waste created through improper food sourcing, production and transportation within the Western world. Taking into account the facilities typically available, graving docks provide an existing framework for successful large scale aquaponic production within some of the world's largest cities.



EXISTING SITE PLAN

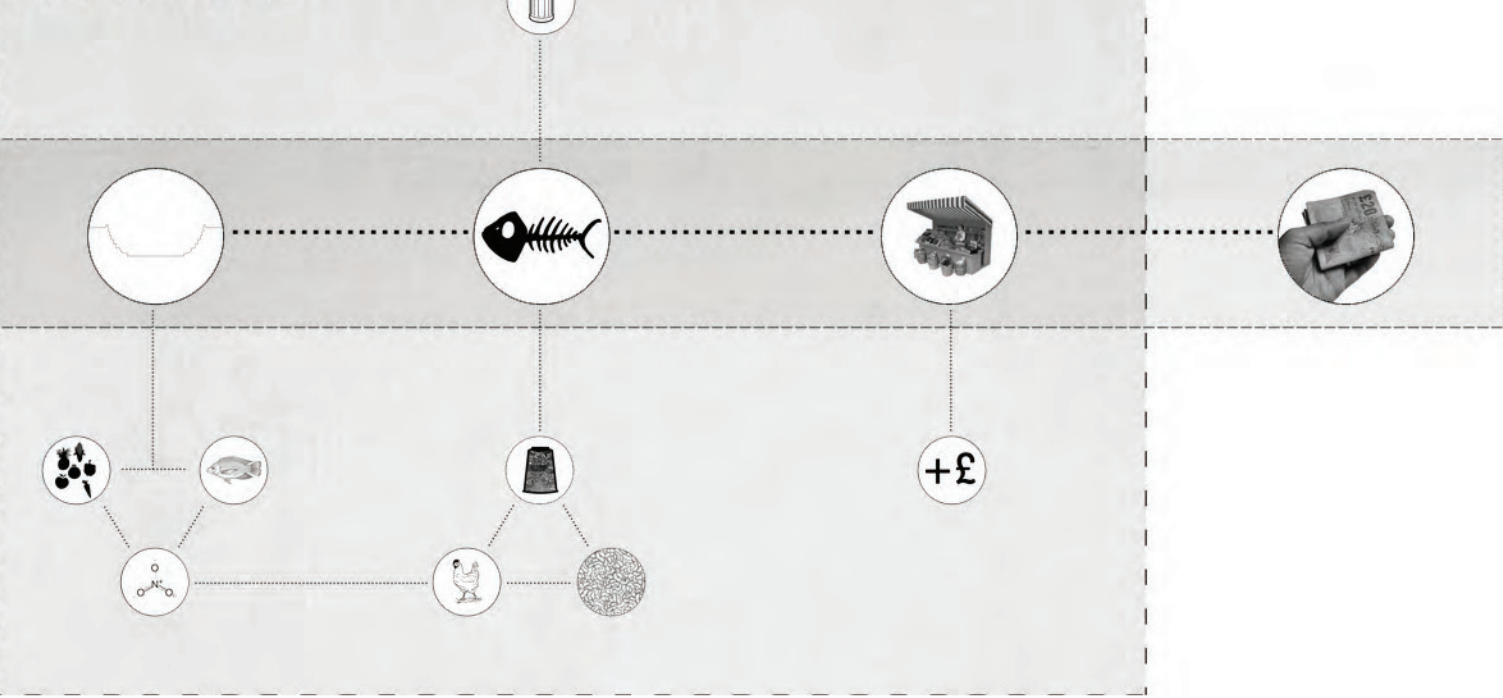


EXISTING CULVERT LOCATIONS



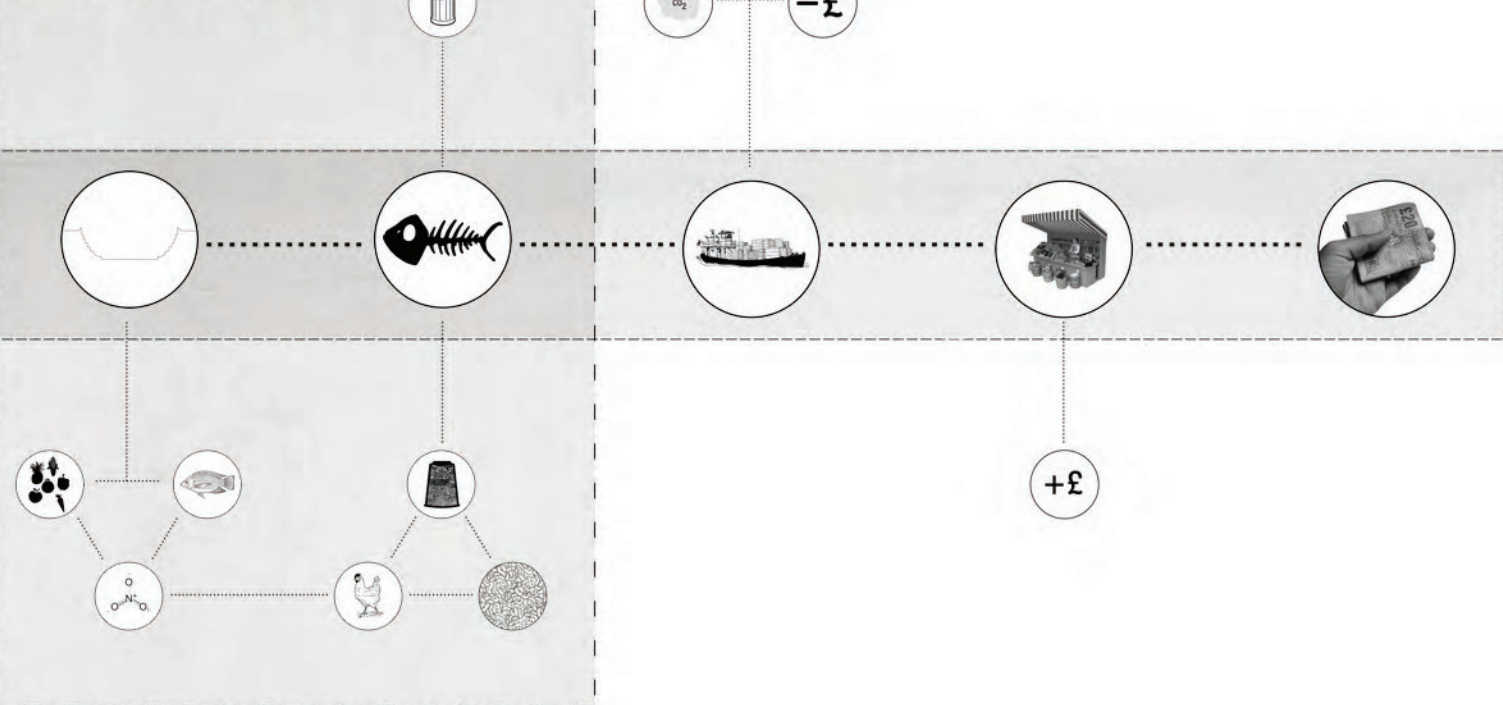
PROCESS 1

FOLLOWING PRODUCTION OF THE PRODUCE AND FISH, ON-SITE PROCESSING OF THE GOODS PREPARES THEM FOR SALE AT AN ON-SITE PRODUCE AND FISH MARKET TO LOCAL VENDORS AND MEMBERS OF THE PUBLIC, IMPROVING LOCAL ECONOMICS.



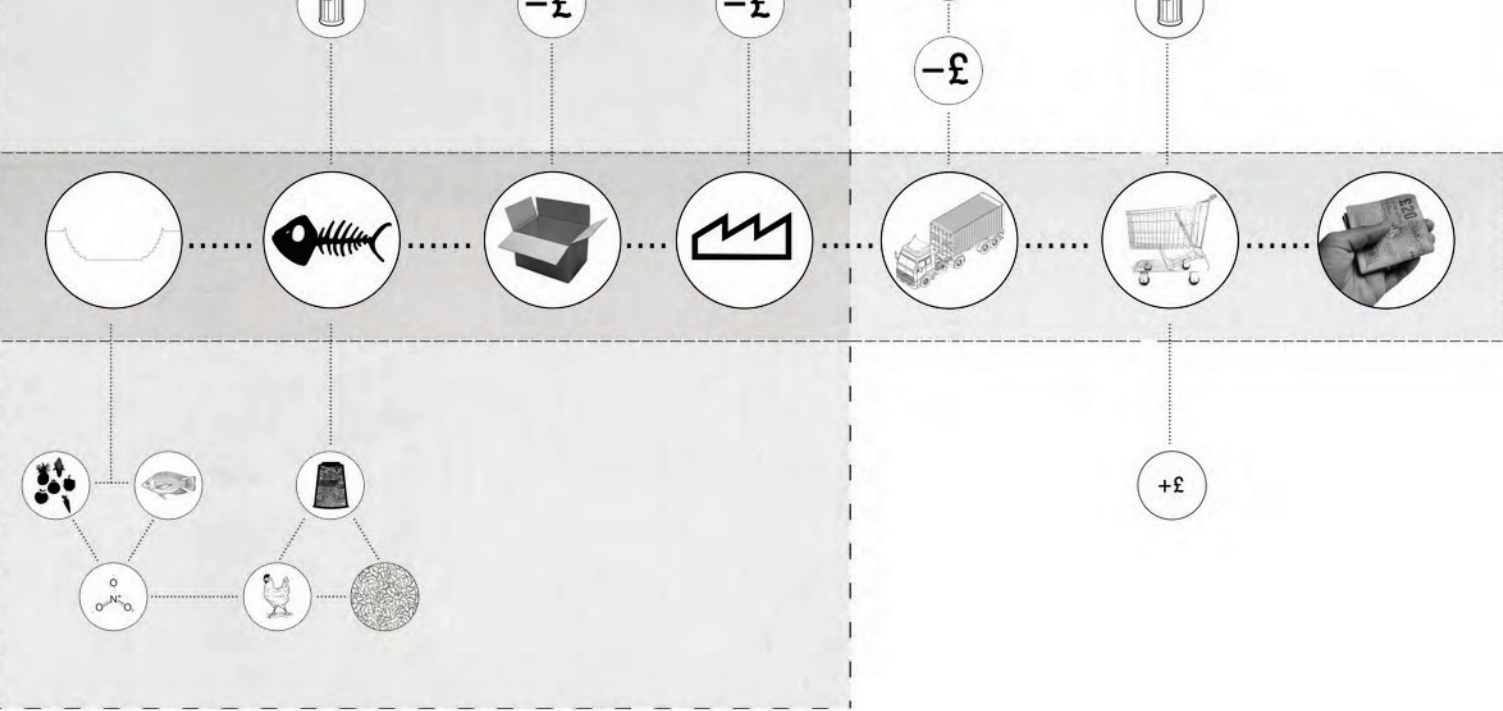
PROCESS 2

FOLLOWING PRODUCTION OF THE PRODUCE AND FISH, ON-SITE PROCESSING OF THE GOODS PREPARES THEM FOR LOADING ONTO CARGO BARGES FOR ECONOMICALLY CONSCIOUS TRANSPORT OF GOODS TO LOCAL COMMUNITIES.



PROCESS 3

FOLLOWING PRODUCTION OF THE PRODUCE AND FISH, ON-SITE PROCESSING AND PACKAGING OF THE GOODS PREPARES THEM FOR SALE TO SUPERMARKETS AND THEIR DISTRIBUTION REQUIREMENTS.



TIDAL BASIN AND CARGO LOADING CRANES



PEDESTRIAN AREA OUTSIDE MARKET

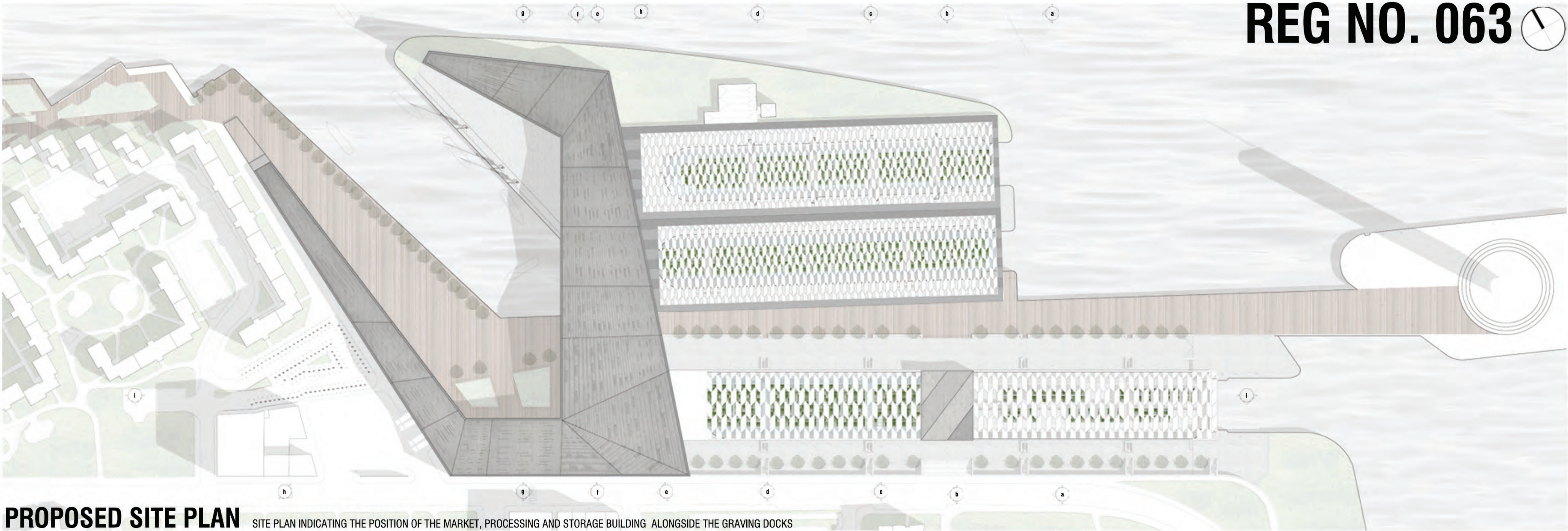
SHORT SECTION

1:500 SECTION THROUGH GOVAN ROAD, AQUAPONIC FACILITIES IN GRAVING DOCKS NO. 3, 2 & 1, THE SOUTH CLYDE WALKWAY, THE FACILITY PUMPHOUSE AND THE RIVER CLYDE SHOWING THE RIVERSIDE MUSEUM AND THE GLENLEE.





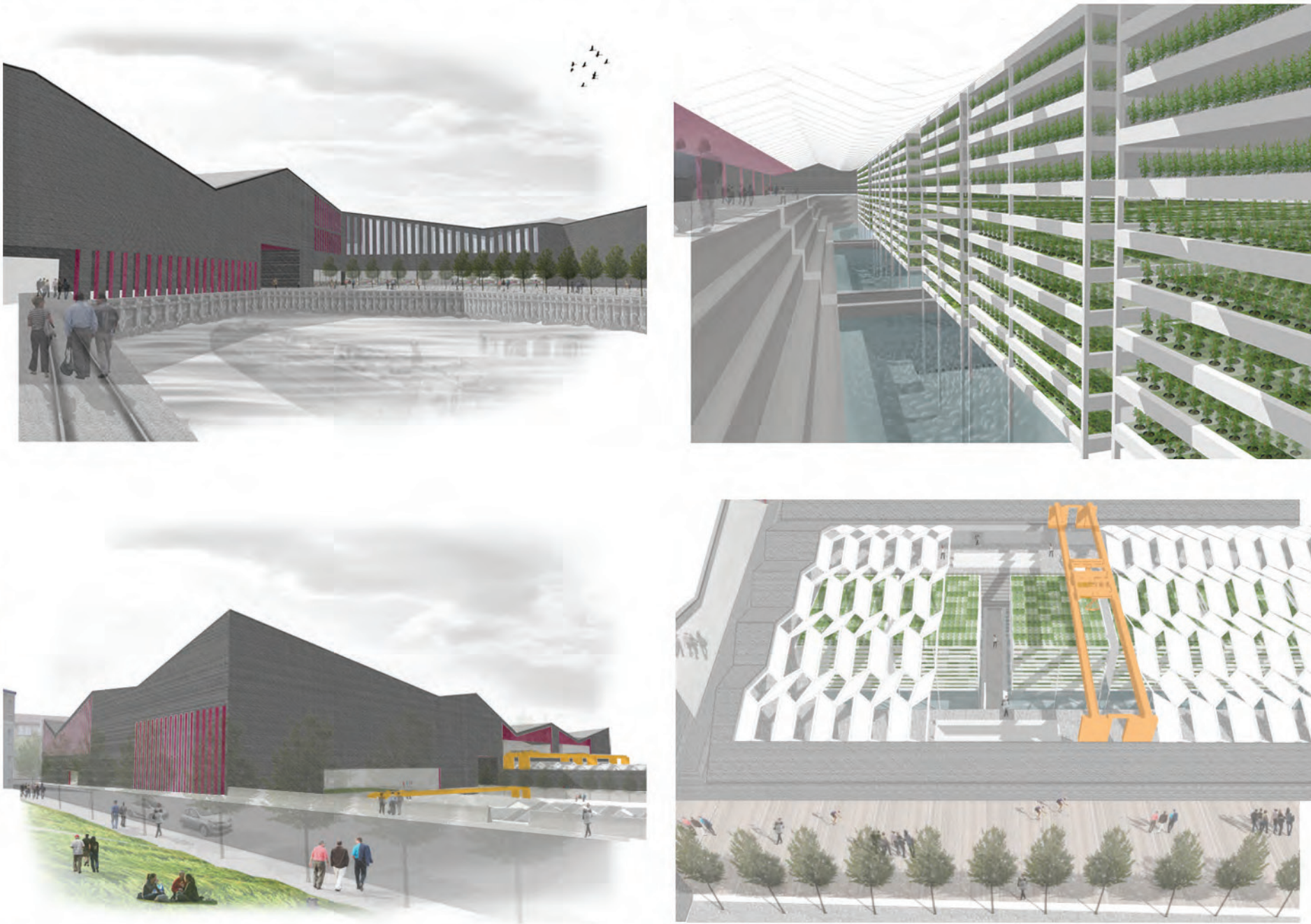
VIEW INTO GRAVING DOCK NO.3



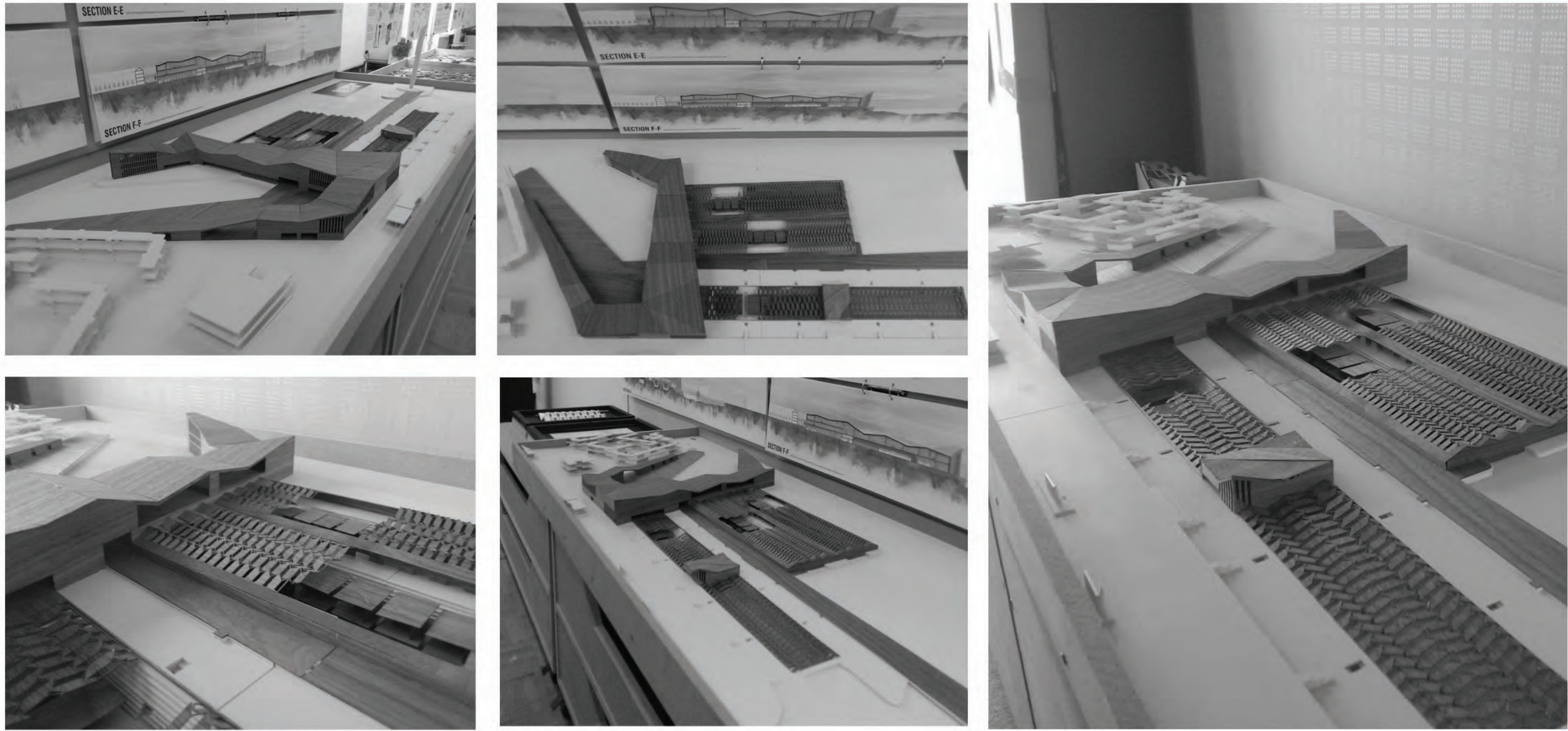
PROPOSED SITE PLAN SITE PLAN INDICATING THE POSITION OF THE MARKET, PROCESSING AND STORAGE BUILDING, ALONGSIDE THE GRAVING DOCKS



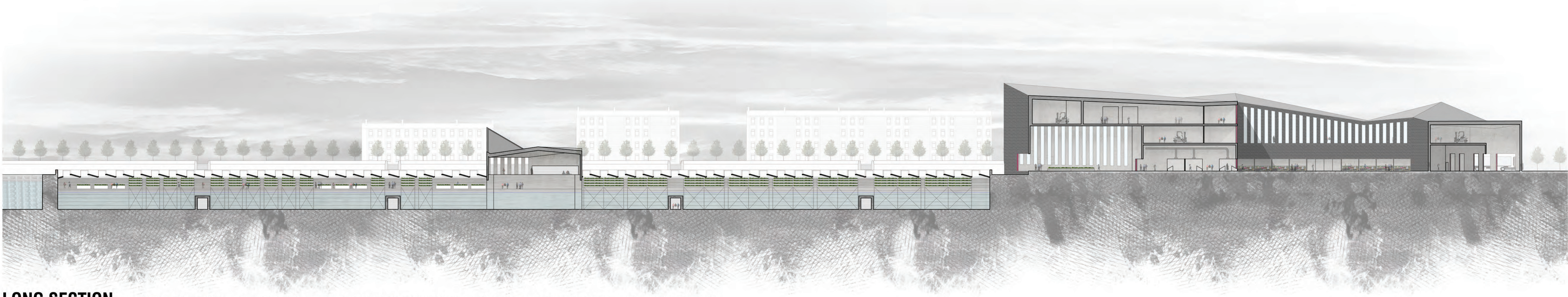
SECTION THROUGH NO.1 & 2 DOCKS



AQUAPONIC FACILITY VIEWS



FINAL PROPOSAL MODEL



LONG SECTION 1:500 SECTION THROUGH PRINCES' DOCK CANTING BASIN, AQUAPONIC FACILITIES IN NO.3 DRY DOCK, PROCESSING AREA, THE MARKET PLACE, STORAGE AREAS AND THE ARTIC. LORRY LOADING BAY.