

INFRASTRUCTURE RECYCLING FOR EDUCATIVE PURPOSES

Cities with limited resources and critical social issues, such as ours, find social equity through education, giving way to the development of culture, economy and politics.

1. Existent: An abandoned industrial space in the city, enclosed and without any practical use; a faulty scar in the middle of the city.

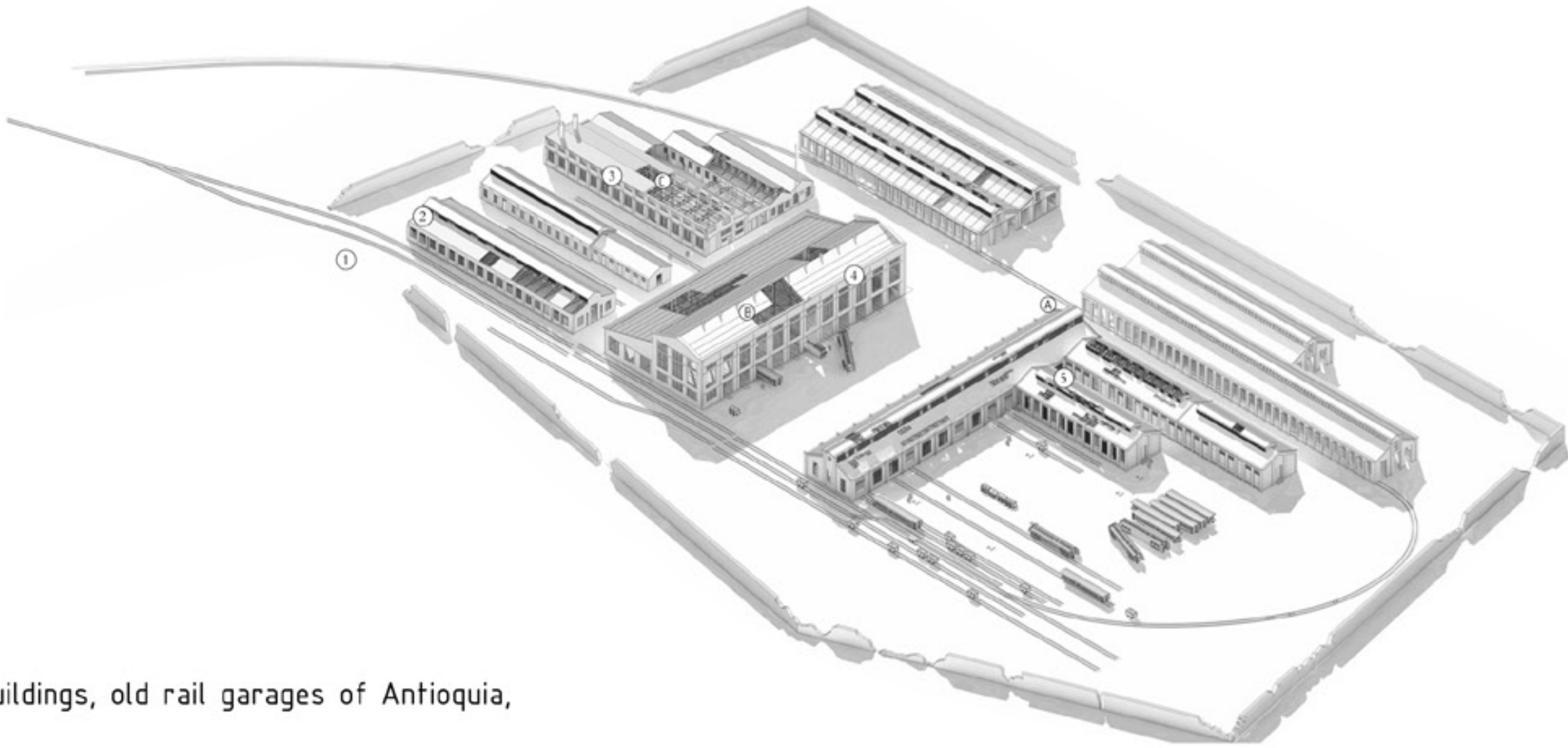
2. Buildings: When this industrial space acquires commercial value, it has very low impact on the city.

3. Terrain: If the same type of use was done in public spaces, it would have an impact on the outskirts of the city, improving the sector's mobility flow and connectivity.

4. Educational: The project brings together buildings, public space and city flows, making the project a big-scale metropolitan epicenter, hence it has a great social impact on the area.

CATEGORIES OF IMPACT

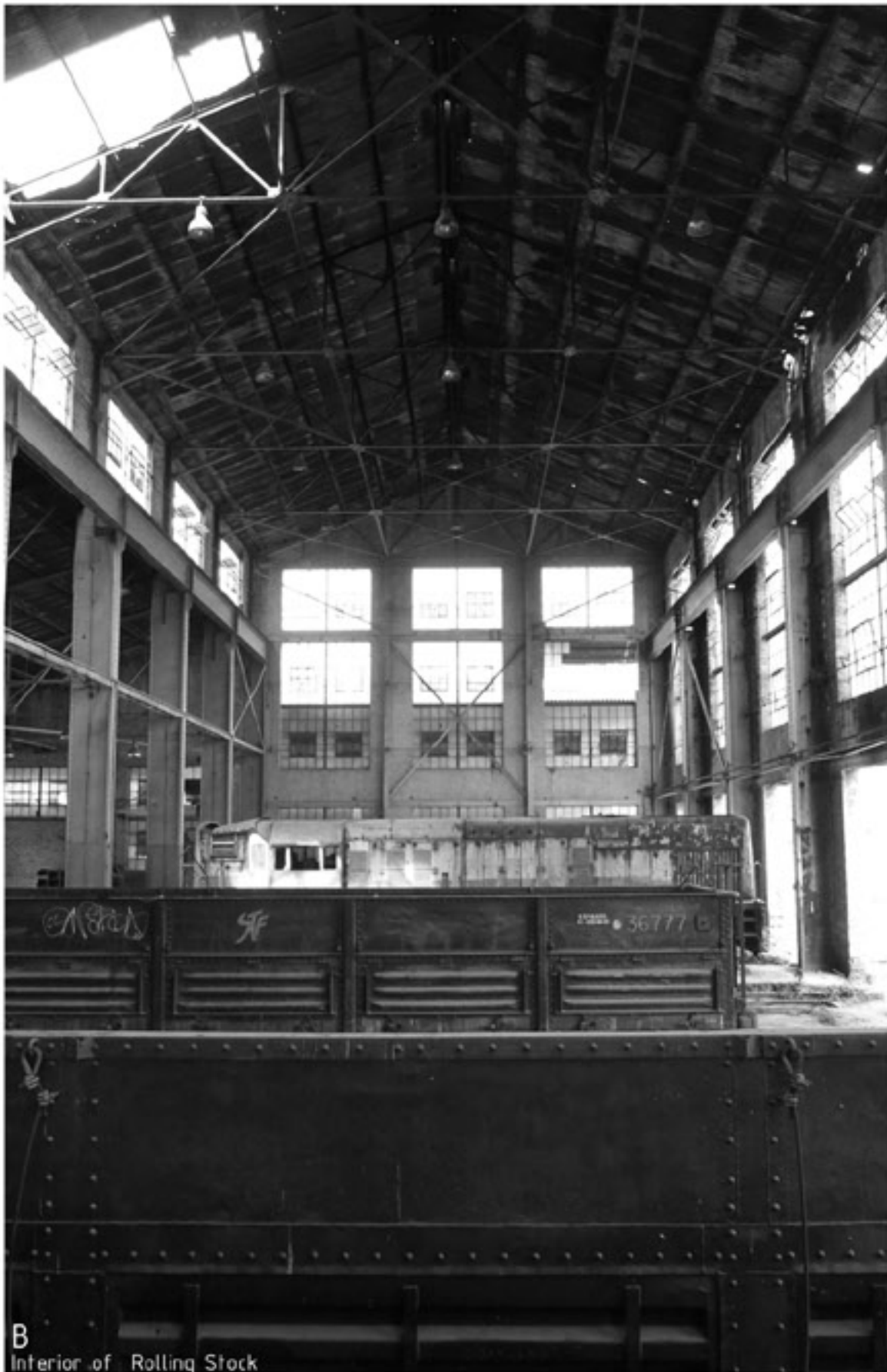
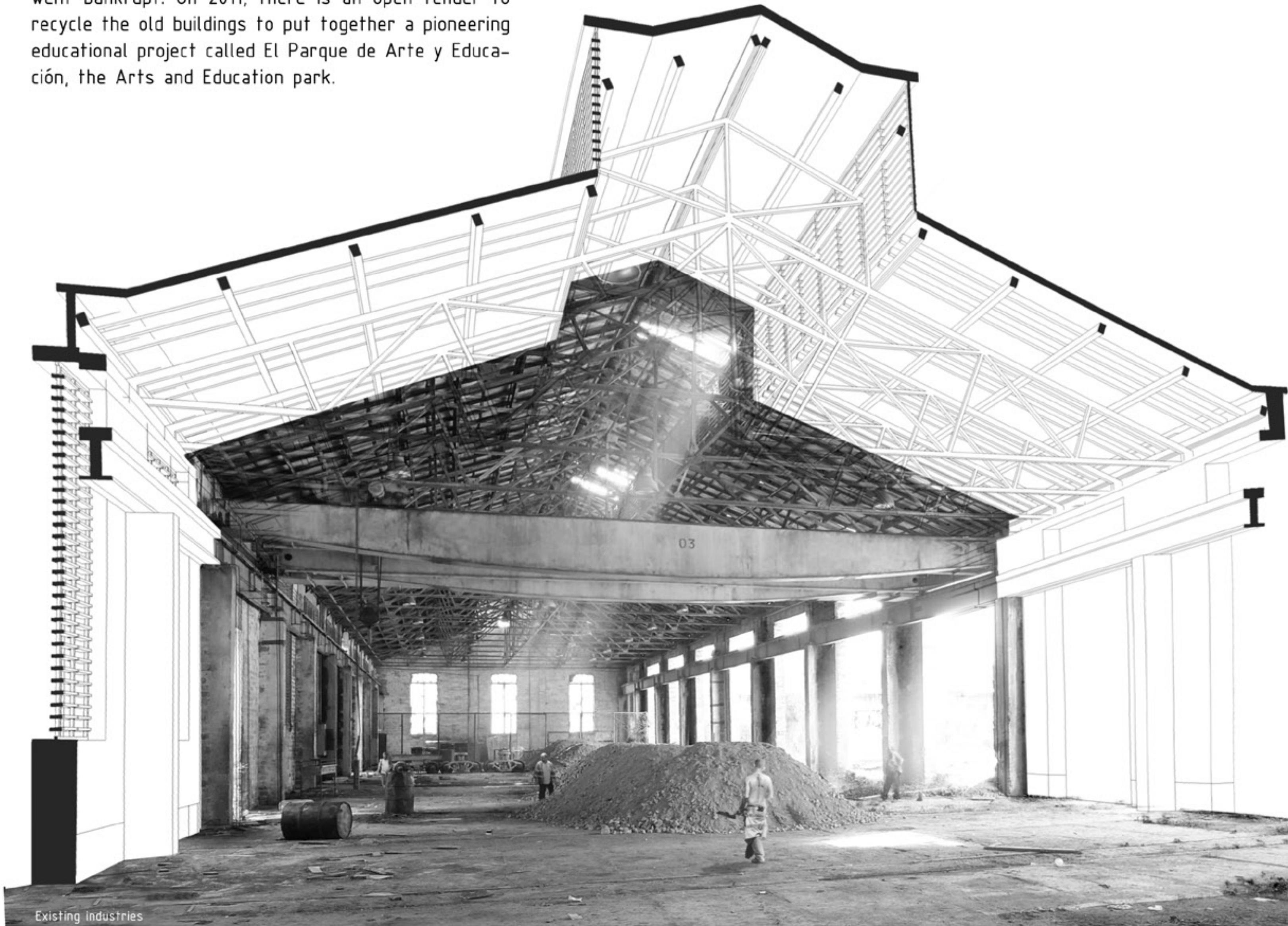
In Colombia, when industries renovate their facilities, they leave behind a huge trace, often due to demolition.



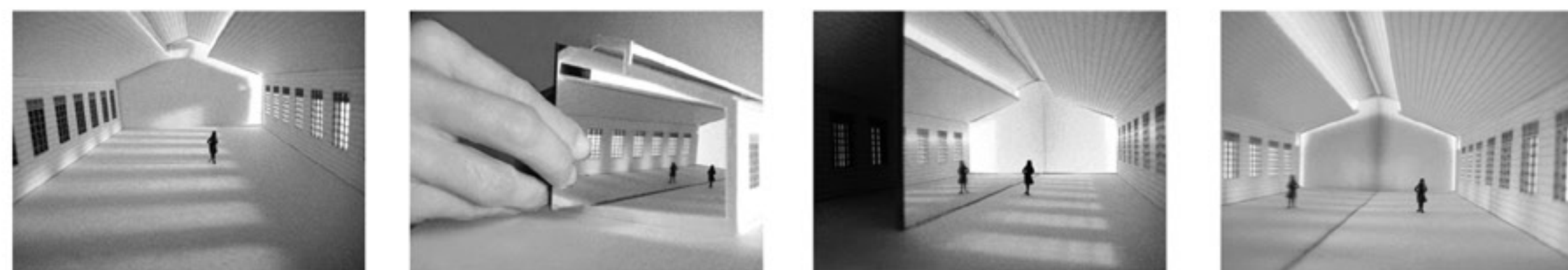
- ① Industrial Machines
- ② Air brake
- ③ Foundry buildings
- ④ Rolling stock
- ⑤ Building electricity

Industrial buildings, old rail garages of Antioquia, Colombia.

Old railroad garages of Antioquia (Talleres de Ferrocarril de Antioquia), located in Bello, Colombia and built at the beginnings of the XX century, were completely abandoned for over 40 years after railroad tracks went bankrupt. On 2011, there is an open tender to recycle the old buildings to put together a pioneering educational project called El Parque de Arte y Educación, the Arts and Education park.





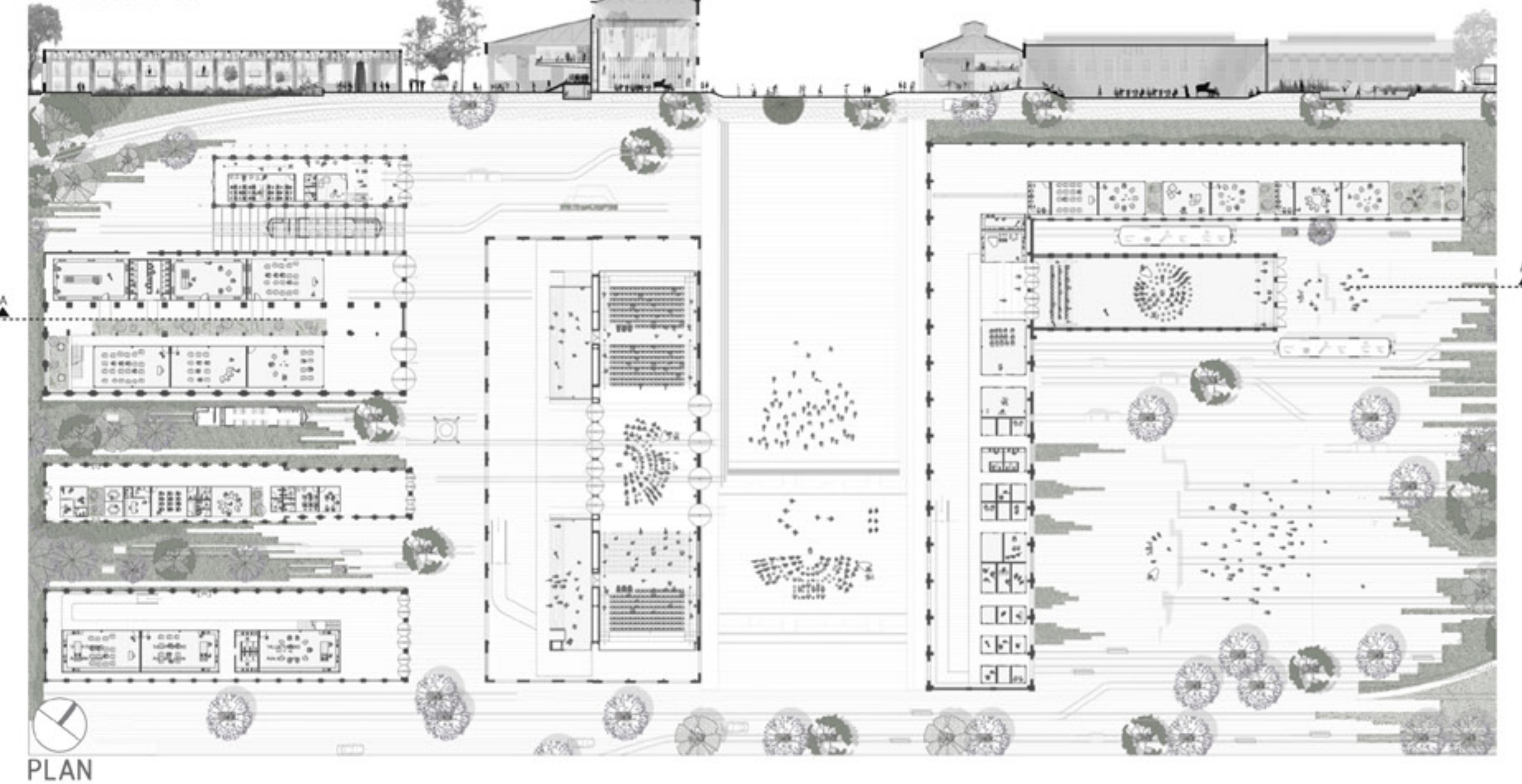


## SPATIAL MEMORY

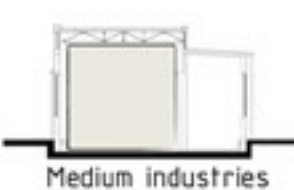
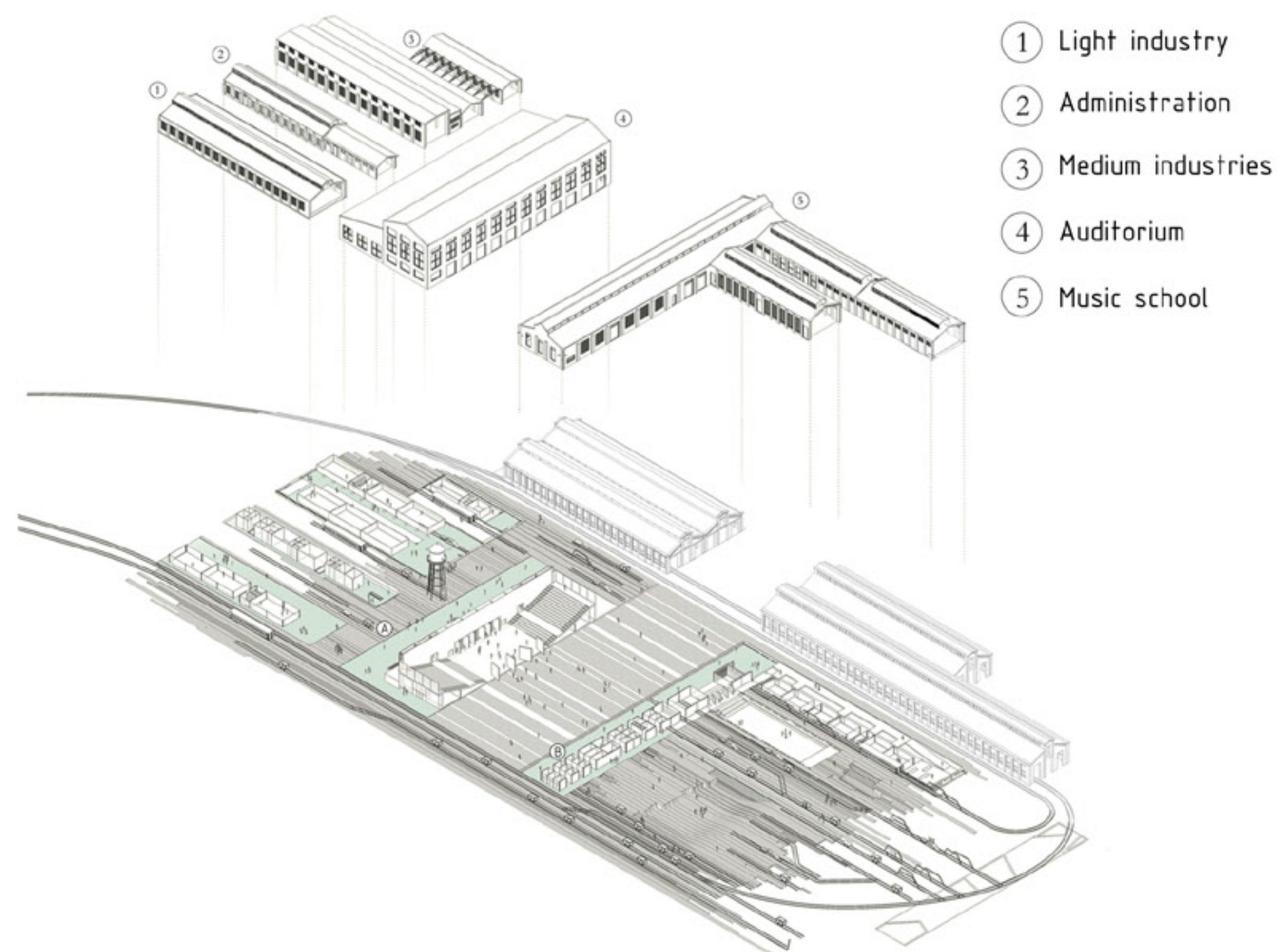
The glass facade hides the program and reflects the spaces of the building, diluting the limits with the reflection of spatial limits.

Area of intervention: 12000 m<sup>2</sup>, built area; 5000 m<sup>2</sup>, public space.

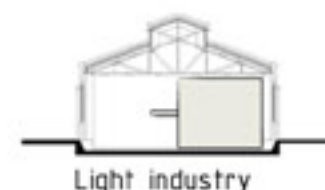
SECTION A-A'



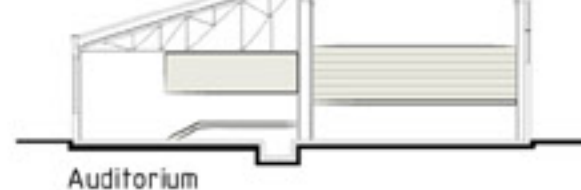
PLAN



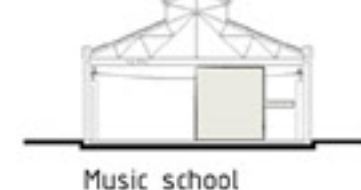
Medium industries



Light industry

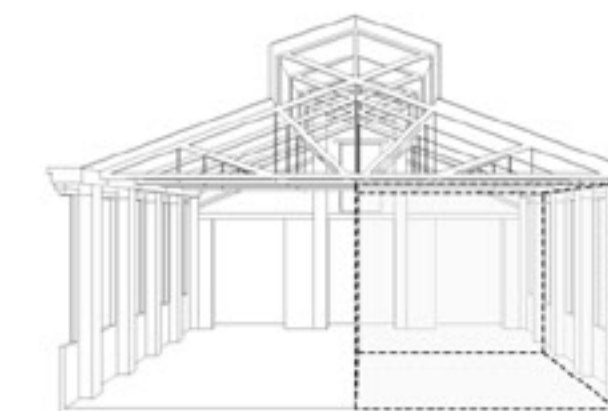
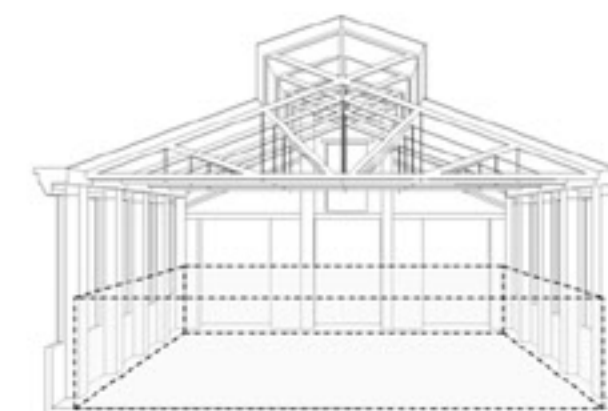
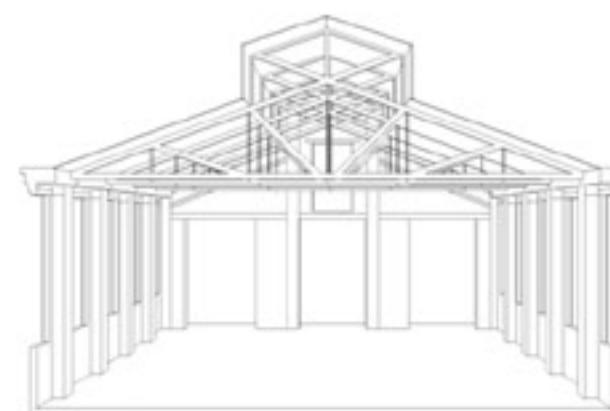


Auditorium



Music school

## BUILDING TYPOLOGY



## DISPOSITION OF THE PROGRAM

We wanted to give value to the industrial buildings through the conservation of spatial memory. Only 50% of the interior of these industrial buildings was used as part of the actual recycled building plan and the other half was used as interior public space. The limits of the new program are diluted through reflection, a strategy that allowed us to finish the section and put together two different times in history.



View of internal street in the project



Reflection reconstructs the industrial space.