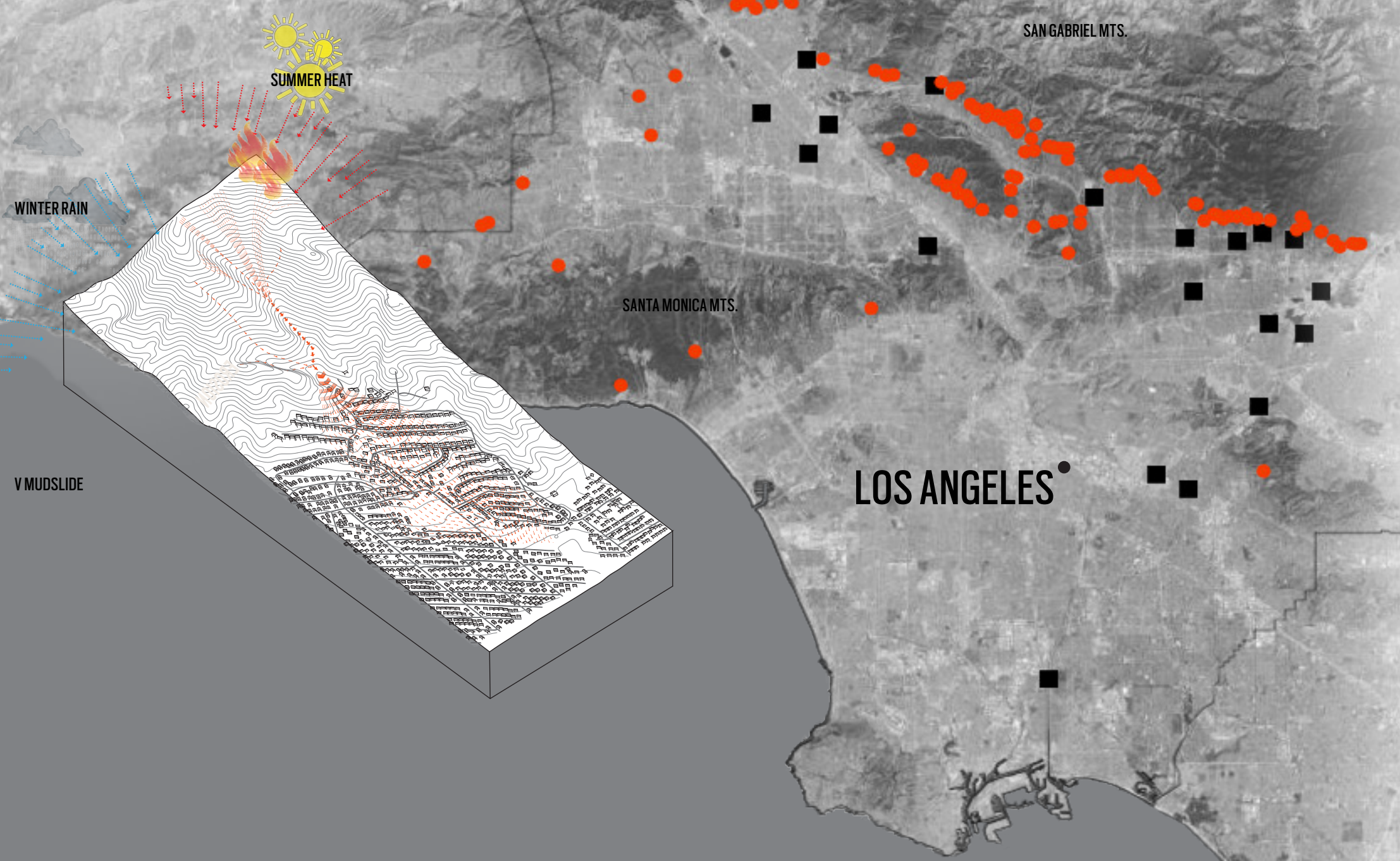
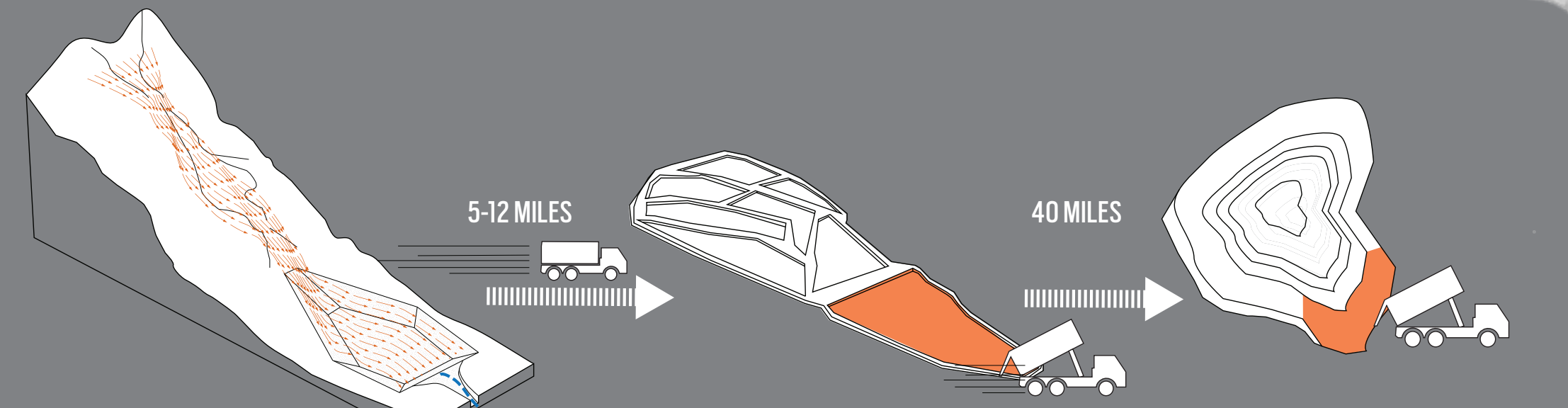


SLIDE

A RESILIENT STRATEGY FOR STABILIZING MUDSLIDES IN LOS ANGELES



FAILING INFRASTRUCTURE WASTE. THROUGHOUT LOS ANGELES, A WASTEFUL PROCESS OF TRUCKING MUDSLIDE DEBRIS HAS FILLED SOME OF THE COUNTRY'S LARGEST LANDFILLS AND SPREADING FIELDS TO PEAK CAPACITY.



162 • DEBRIS BASINS COLLECTS SEDIMENT
900 ■ ACRES SPREADING FIELDS STORES SEDIMENT / INFILTRATES WATER
10,000,000 CUBIC YARDS OF MUD (20 YEARS) LANDFILL FINAL PLACEMENT OF SEDIMENT

\$279 MILLION BASIN CLEAN-OUT & TRUCKING OVER NEXT 20 YEARS
SOURCE: COUNTY OF LOS ANGELES DEPARTMENT OF PUBLIC WORKS DEBRIS BASIN STRATEGIC PLAN, 2013

STORMS OF FIRE & MUD

Fire. Flood. Mud. The three storms of Los Angeles present a volatile cycle of yearly extreme weather. The 20th century sprawl of Los Angeles was predicated on an expediency of nature; highly controlling ecological processes. This infrastructure's 50 year life span has ended, leaving a rigid and weak approach to managing extreme weather. In 2009, the foothills of Los Angeles were ground zero for the 525 sq. mi Station Fire and its subsequent mudslides that ravaged a region. This project dismantles both the disaster and its failed infrastructure to envision a resilient infrastructure for fire and mudslide prone communities. By hacking into natural processes of mudslides and wildfire, we are able to create a strategy that takes advantage of the material produced from the disaster. This new geology of mountain making is a hybrid infrastructure of both natural and synthetic interactions aimed at re-thinking extreme weather and space it makes.

2013-2033 REGIONAL STRATEGY

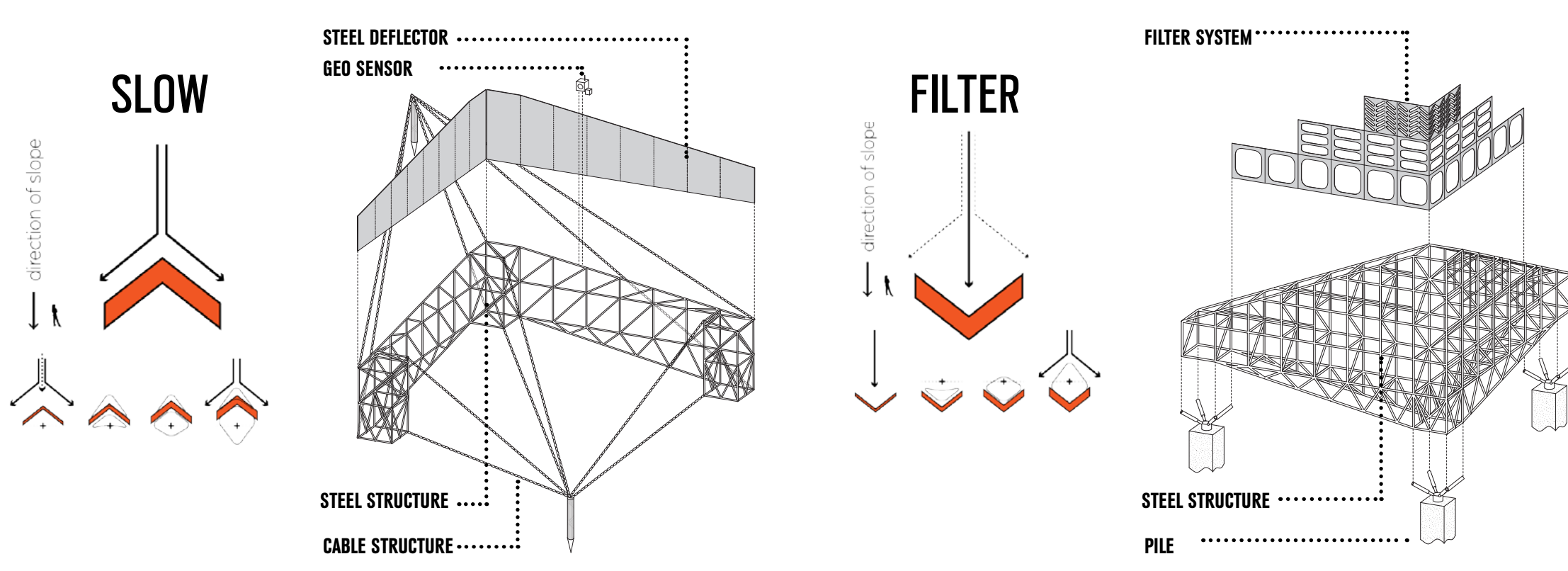
GROW. BY REUSING DEBRIS FROM MUDSLIDES, MORE MATERIAL IS AVAILABLE THROUGHOUT THE YEAR, CREATING AN OPPORTUNITY FOR OPEN-ENDED GROWTH OF THE SYSTEM.



ENTRY# 015
"LANDSLIDES AND OTHER 'GROUND FAILURES' COST MORE LIVES AND MONEY EACH YEAR THAN ALL OTHER DISASTERS COMBINED, AND THEIR INCIDENCE APPEARS TO BE RISING. NEVERTHELESS, THE GOVERNMENT DEVOTES FEW RESOURCES TO THEIR STUDY - AND THE FOOLHARDY CONTINUE TO BUILD AND LIVE IN PLACES LIKELY TO BE CONSUMED ONE DAY BY AVALANCHES OF MUD."
-BRENDA BELL, THE ATLANTIC MONTHLY (JAN. 1999)

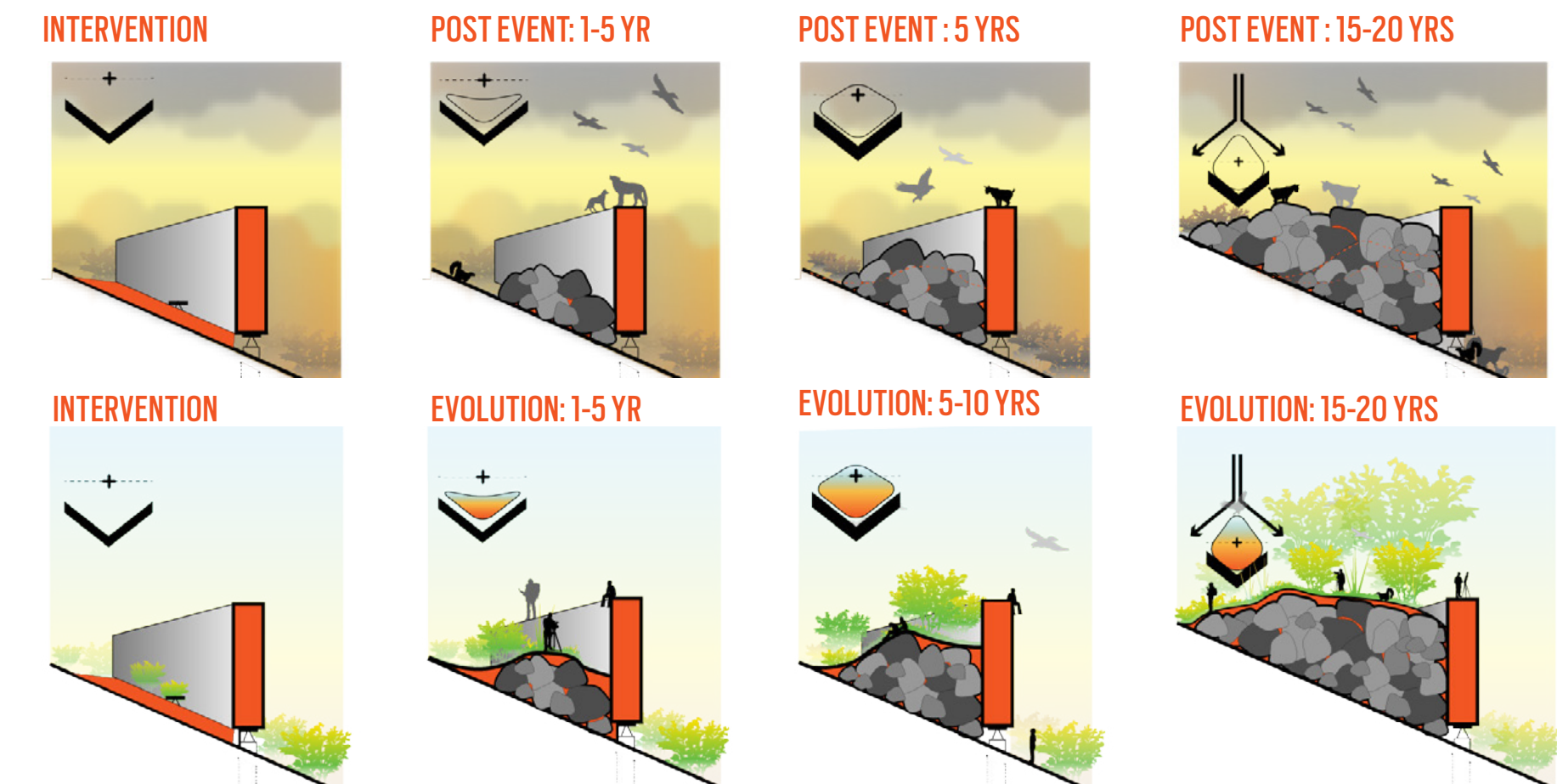
MICRO-BASIN

SLOW. FILTER. THE MICRO-BASIN SERVES TWO FUNCTIONS IN MITIGATING EXTREME WEATHER TO CREATE A NETWORKED, RESILIENT, AND ADAPTIVE SYSTEM.



SYSTEM EVOLUTION

ACCUMULATE. THROUGH THE REPETITION OF EXTREME WEATHER EVENTS, THE MICRO-BASINS COLLECT AND GROW FROM DEBRIS, ALLOWING PROGRAM AND HABITAT TO EMERGE.



CANYON STRATEGY 20 YEARS AFTER ESTABLISHMENT, THE SHIELDS CANYON CASE STUDY SHOWS A DIVERSE NETWORK OF USER-INITIATED PROGRAMS THROUGHOUT THE CANYON AND CONNECTING DOWN TO THE VERDUGO WASH.



ACTIVE SYSTEM WORK. DURING EXTREME WEATHER EVENTS THE MICRO-BASIN SYSTEM BECOMES A PLACE OF TOTAL INFRASTRUCTURE WHERE THE WHOLE HILLSIDE WORKS AS A SYSTEM CATCHING AND SLOWING DEBRIS.



LATENT SYSTEM PLAY. DURING MOST OF THE YEAR THE MICRO-BASIN NETWORK IS THE OPPOSITE OF A PARK. IT BECOMES A PLACE WHERE ITS USERS VISIONS OF PUBLIC SPACE CAN BE PLAYED OUT, ALLOWING AN OPEN ENDED VARIETY OF PROGRAMS TO EMERGE.



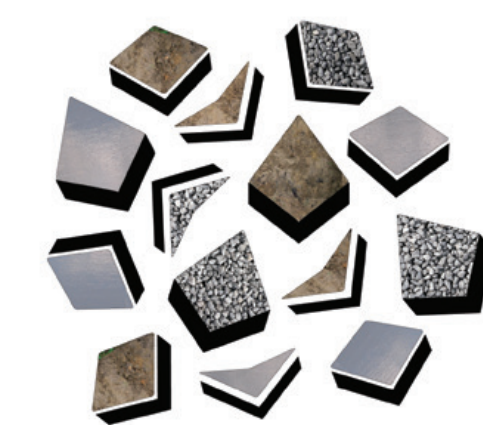
MATERIAL REUSE REUSE. BY TAILORING MICRO-BASINS TO FILTER AND CATCH SPECIFIC MATERIAL, COLLECTION POINTS EMERGE THROUGHOUT THE HILLSIDE THAT CAN BE REUSED ACROSS THE REGION.



10% ROCK

30% SAND/SILT

60% WATER



\$1.12

EST. NET VALUE PER TON

SOURCE: COUNTY OF LOS ANGELES DEPARTMENT OF PUBLIC WORKS SEDIMENTATION STUDY, 2011

MINI_QUARRY

LOAM_FARM

AQUA_BASIN

- MATERIAL TO BUILD MICRO BASINS
- MATERIAL FOR BUILDING GABION JERSEY BARRIERS IN ADJACENT COMMUNITIES
- MATERIAL FOR INFRASTRUCTURE NATURALIZATION PROJECTS IN THE REGION
- RICH SOIL DEPOSITS FOR NEIGHBORHOOD GREENING PROJECTS
- ON-SITE TREE GROWING PROGRAMS PROVIDE TREES TO THE REGION
- ON-SITE COMMUNITY FARMS PROVIDE FRESH PRODUCE TO COMMUNITY
- VERNAL POOLS PROMOTE BIODIVERSITY OF HABITATS
- POOLS CREATE MICRO AQUIFERS FOR FIGHTING FIRES
- POOLS PROMOT GROWTH OF LESS FIRE PRONE SPECIES



MOBILE TREE FARM: BY USING THE RICH TOPSOIL CREATED IN SELECT MICRO-BASINS, TREES CAN BE GROWN AND DEPLOYED ACROSS LOS ANGELES, BRINGING THE CANYONS TO THE CITY.