

Smart Dock *The Lucent Cube* 59

ONE Lab Educational Facilities at the Brooklyn Navy Yard

‘To live is to leave traces.’

The Lucent Cube is a frame work for ingenious ideas, a puzzle for advantageous exploration, and most importantly a white canvas for artistic creations.

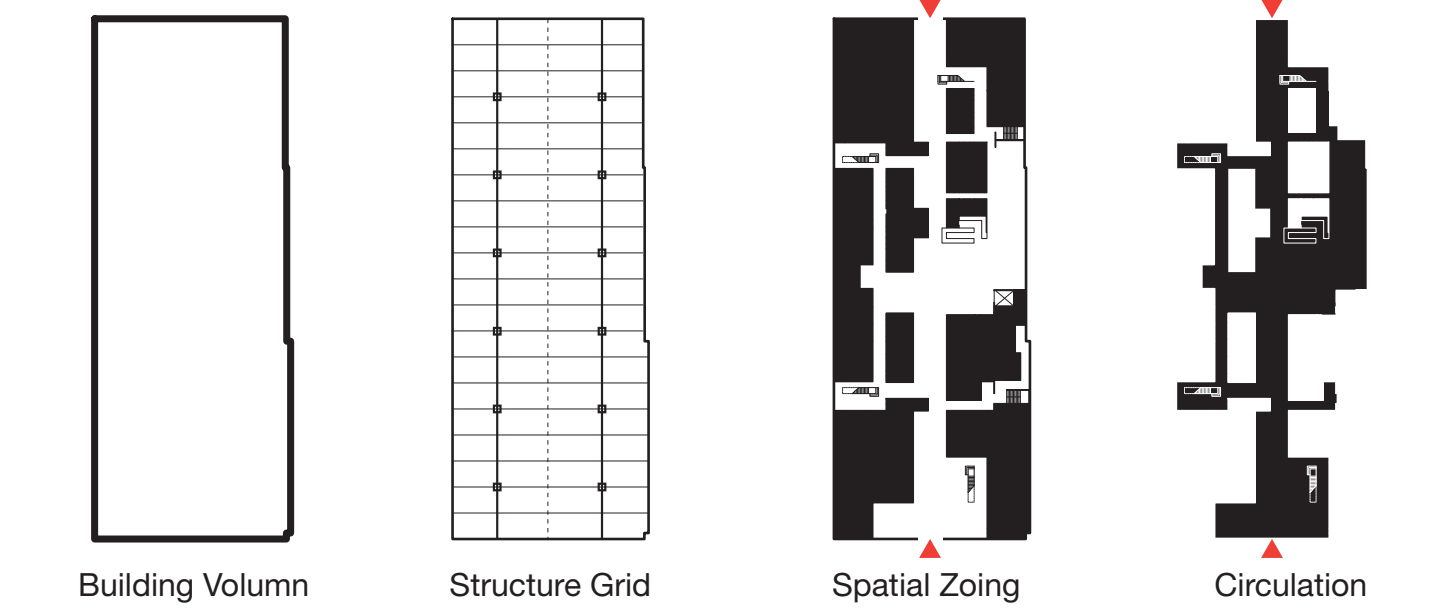
Our proposal embraces the existing building structure and its change of use, by respecting and working closely with the original master plan of Macro Sea, we have created a building not only satisfying the functional use for One Lab, but an architecture that harmonizing the social/physical context of Brooklyn Navy Yard.

Our concept of anticip ating changes and adaptable space has developed into a floating lucent cube filled with ‘soft boundaries’, the separation partitions are operable both in the public workshop spaces, allowing maximum public use such as exhibitions, open lectures etc.

The idea of elevating the the One Lab volume was inspired from the industrial functional arrangement of building 128; an strong image of suspended navy ships hung from the gantries, allowing a maximizing open plan for an interactive open plan working environment. Our proposal is a tribute to the the industrial heritage of Brooklyn Navy Yard.

The lucent cube made of polycarbonate floating above the public exhibition area and workshops. Both the facade and internal partitions are made of polycarbonate, such translucent material creates an interesting narrative with the existing building. The semi transparent and reflective material with its minimalist quality creating a strong contrast against the existing dark and complex steel frame structure.

The use of translucent material blurs the building boundary, the interplay of old and new opens up a new perspective for vistors to appreciate the Building 128.

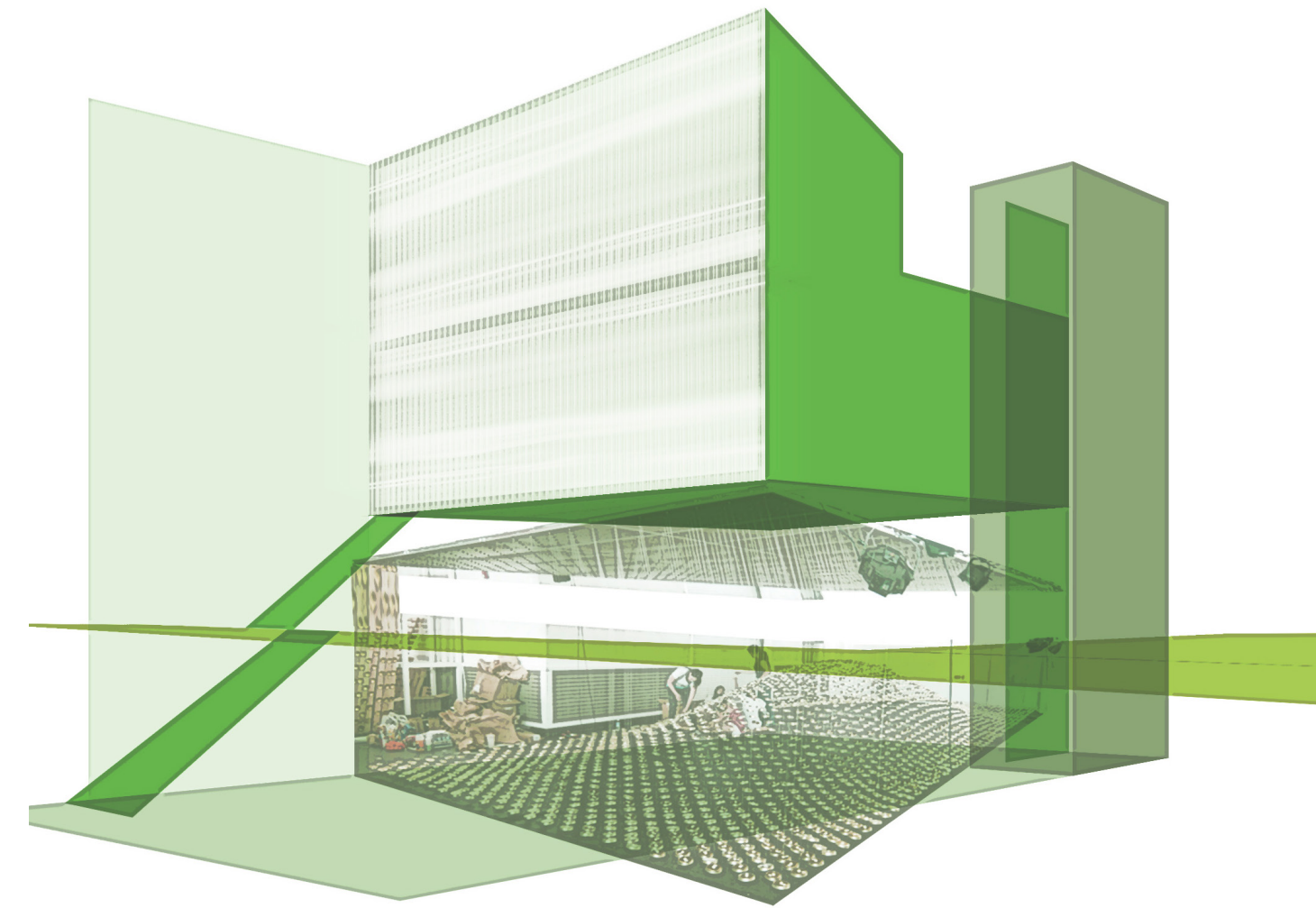


Existing Building Studies



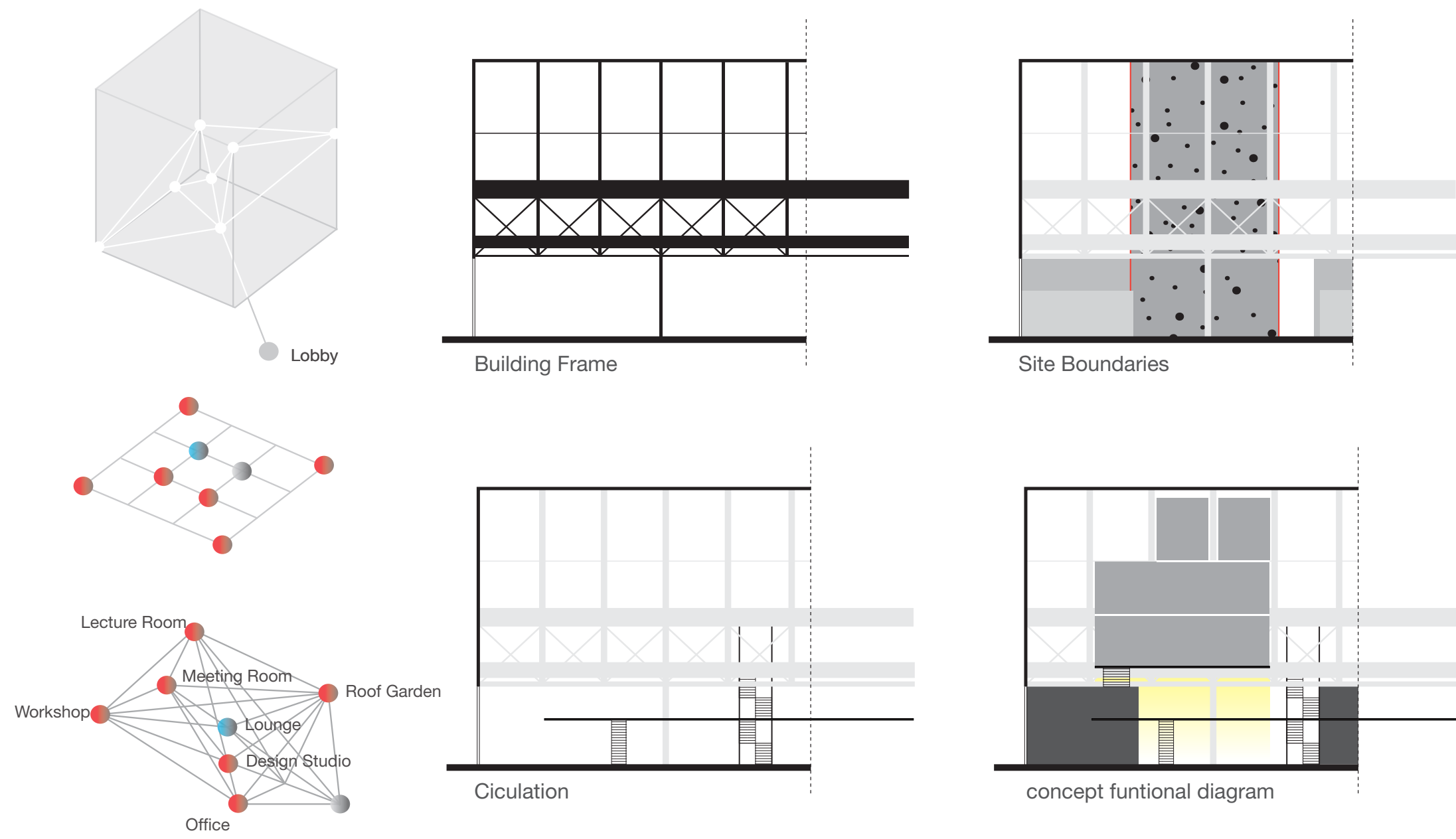
From heavy Industry to light intellegency

A massive industrial facility, with an enormous open space, natural light, and infrastructure for heavy industry will be transformed into a center for innovation, with state-of-the art digital fabrication facilities, and a combination of tenant-occupied and shared work spaces.



Concept Drawing

Polycarbonate box floating above the public exhibition area and workshops.The main access staircase becomes an emblematic extension of the main volume.



Users Diagram

The proposition of ONE Lab will act as acatalyst on enhancing public activities and and knowledge exchange as well as encouraging social communication. Our approach is to Generously give more public accessible spaces which provides open learning and temporary exhibition etc.

Fuctional Diagrams

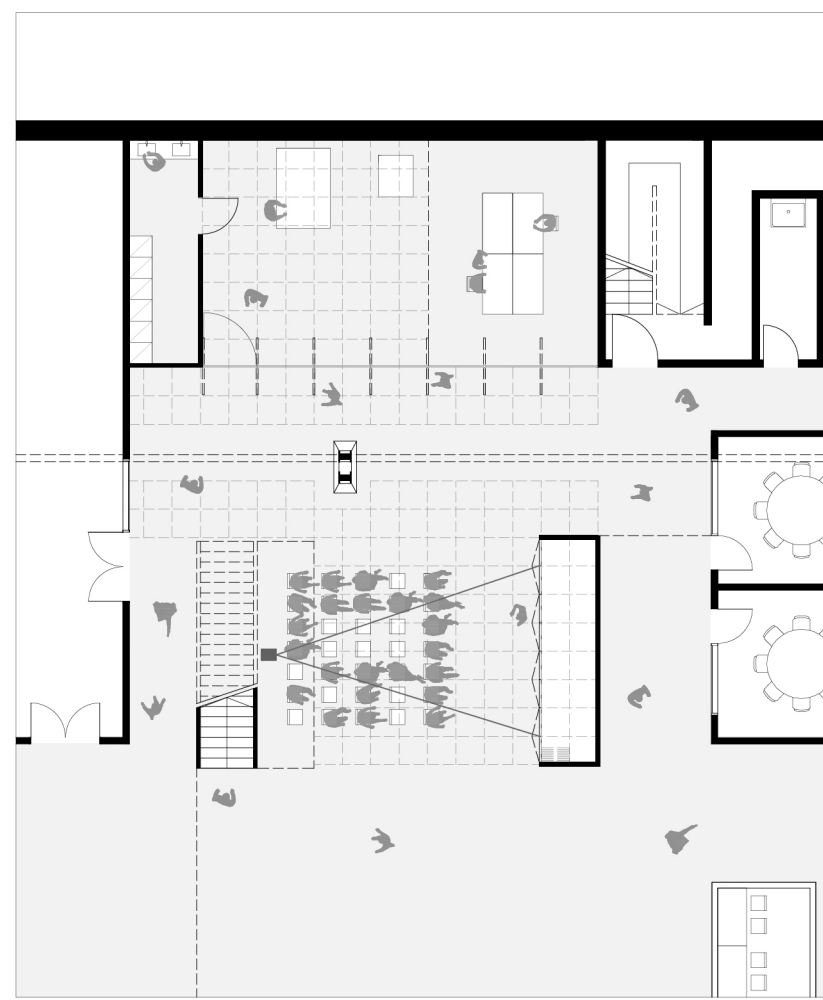


Flexible Space

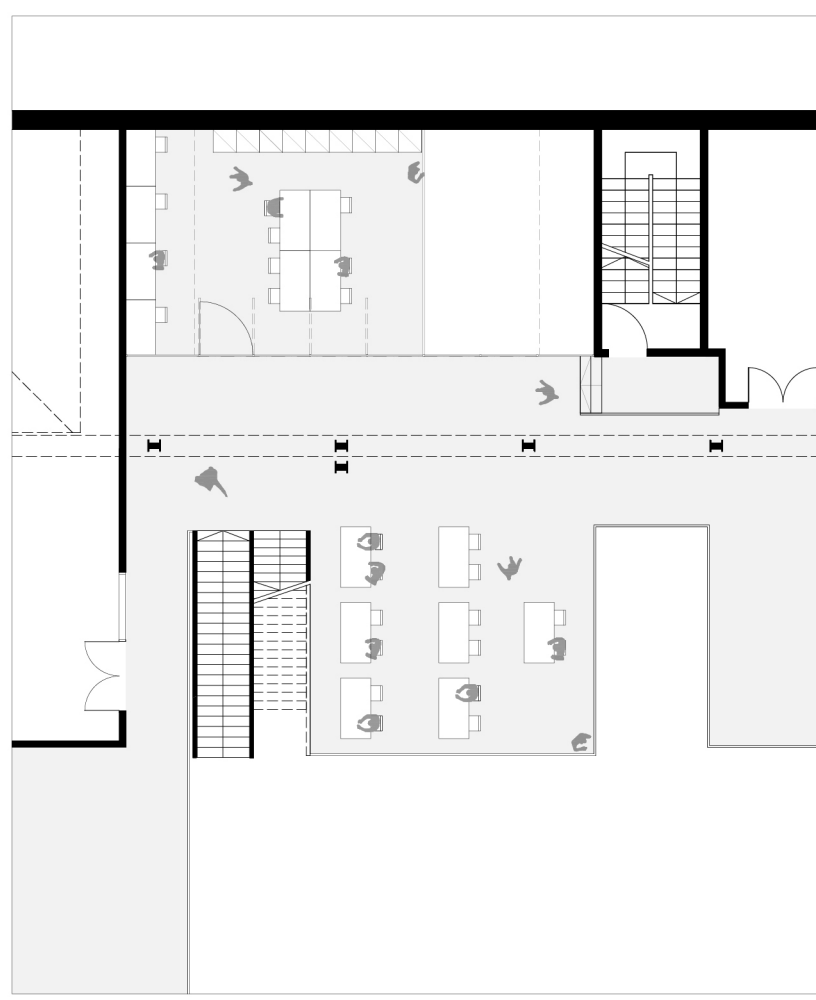
Our proposal works directly with Macro Sea's Master Plan: by elevating the frontal open office room, an inviting space have been created which replaces the previous project space positioned in an awkward central circulation space. With the use of folding doors it can open up towards the public presentation area in the front to serve as an exhibition space.



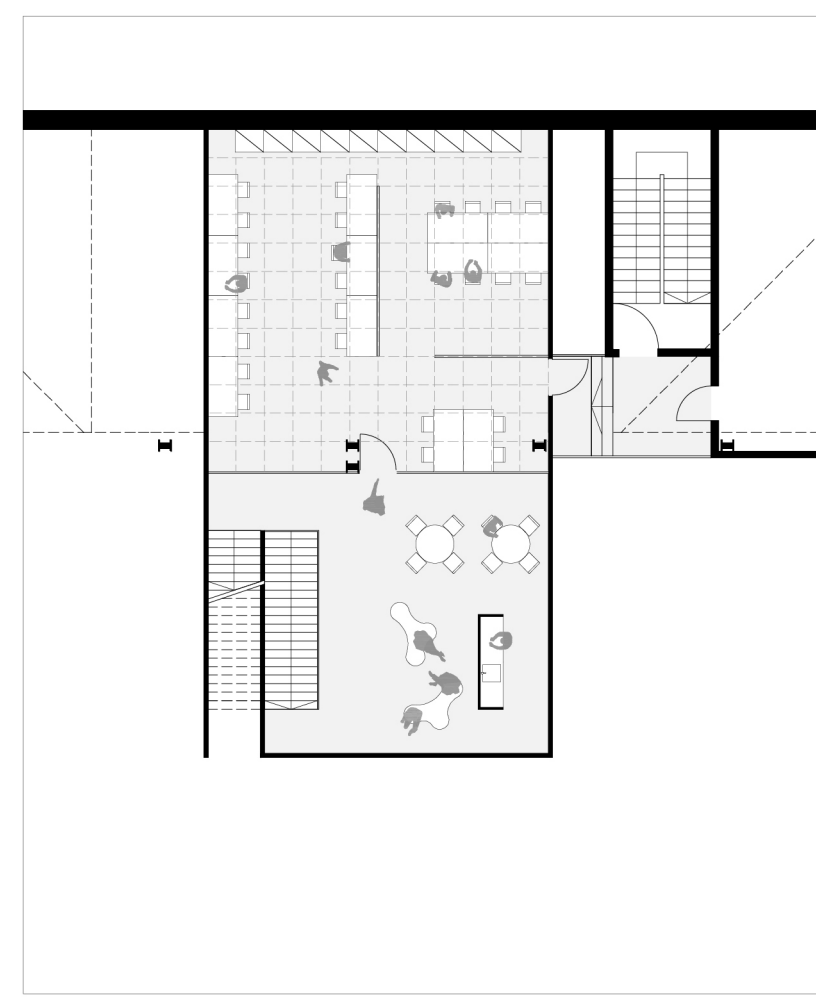
Exhibitions Space



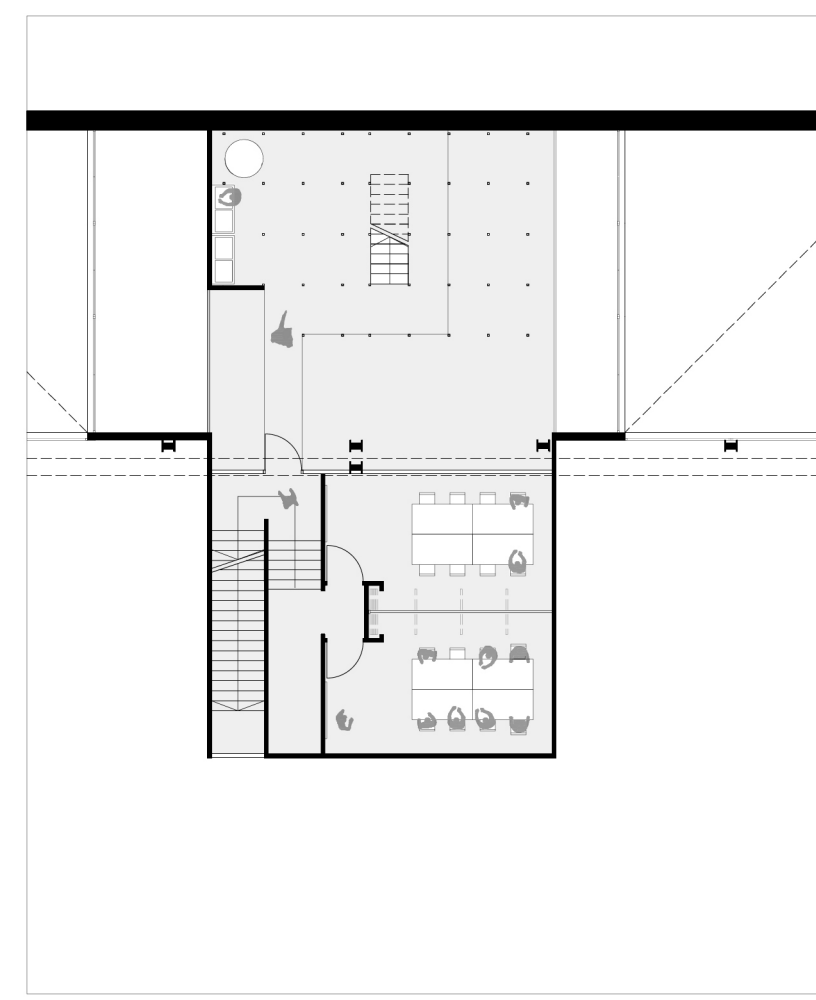
Ground Floor Plan



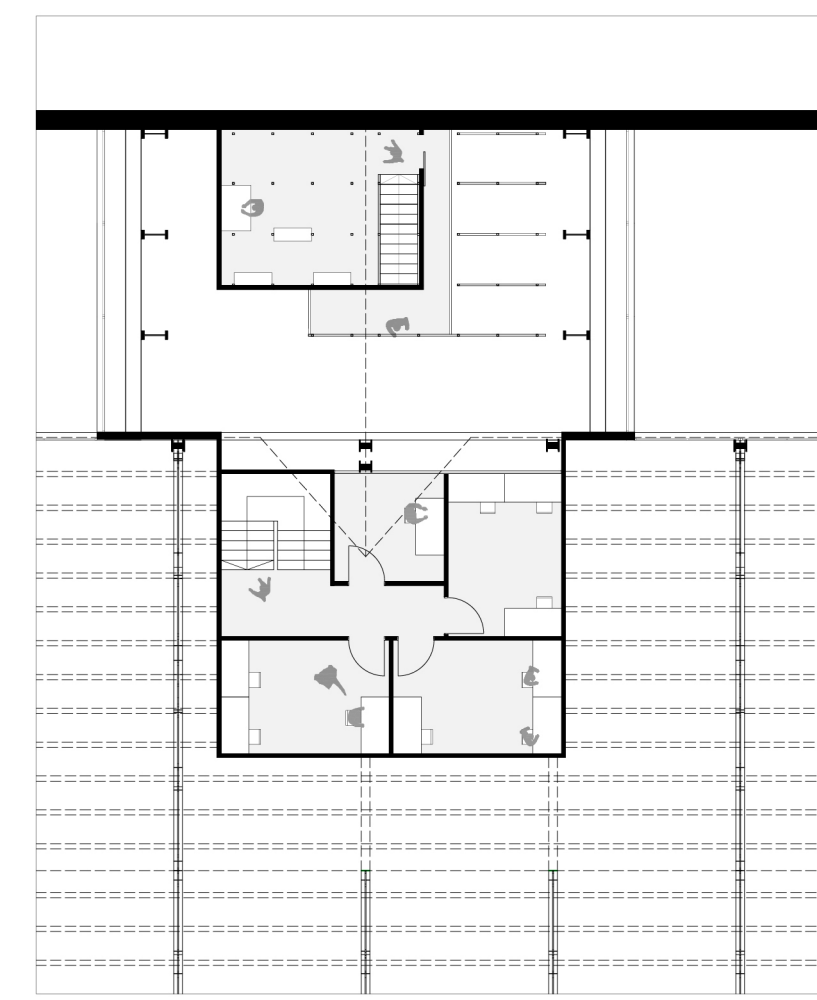
First Floor Plan



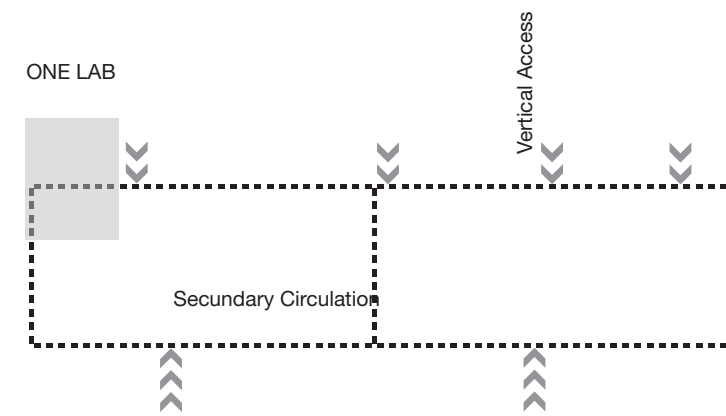
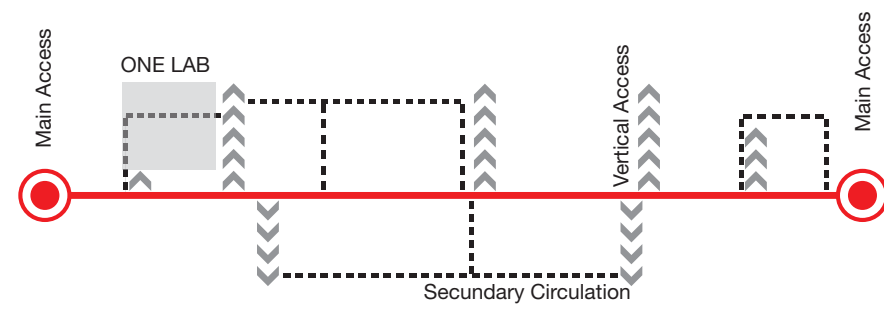
Second Floor Plan



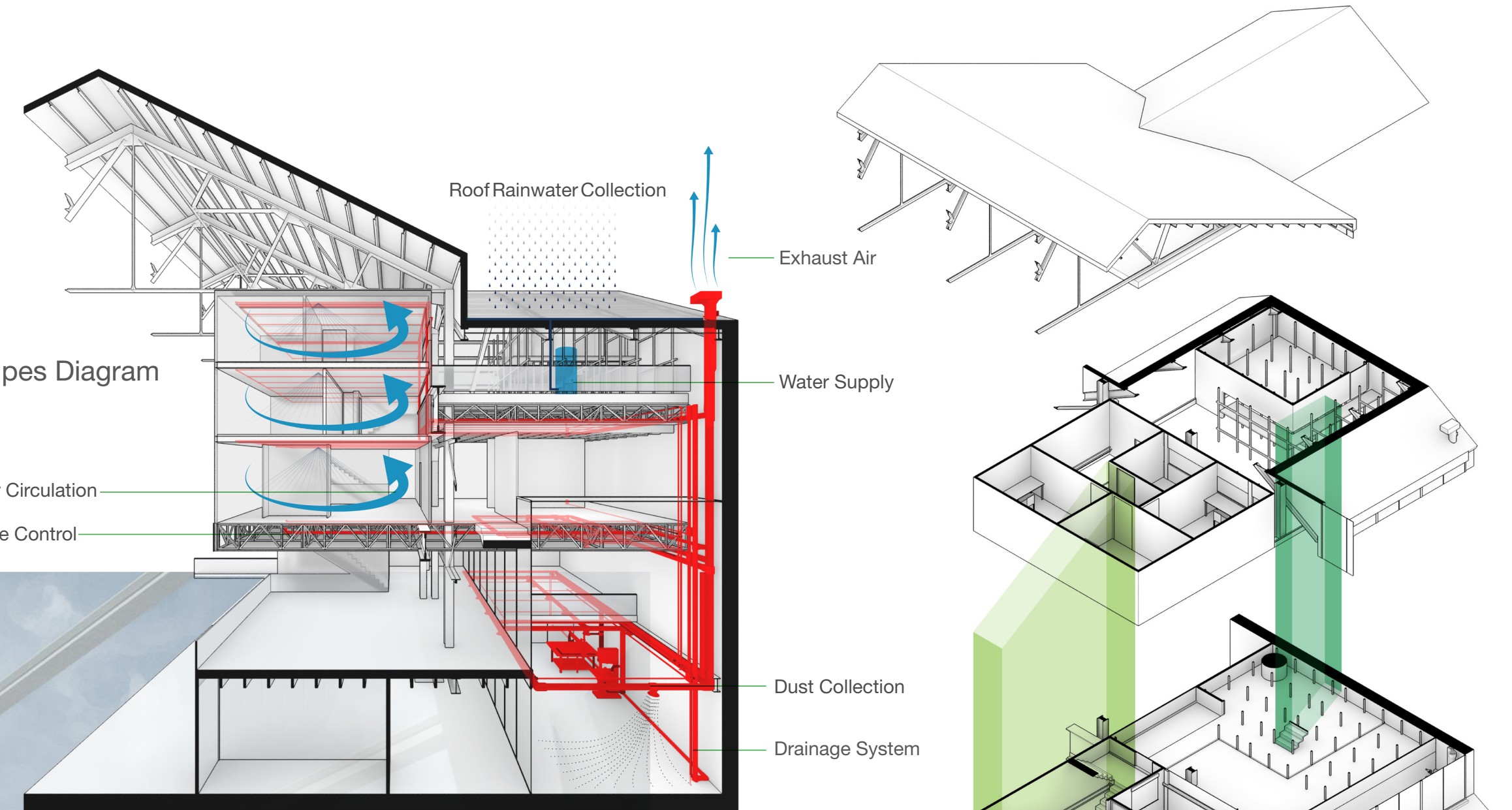
Third and Fourth Floor Plan



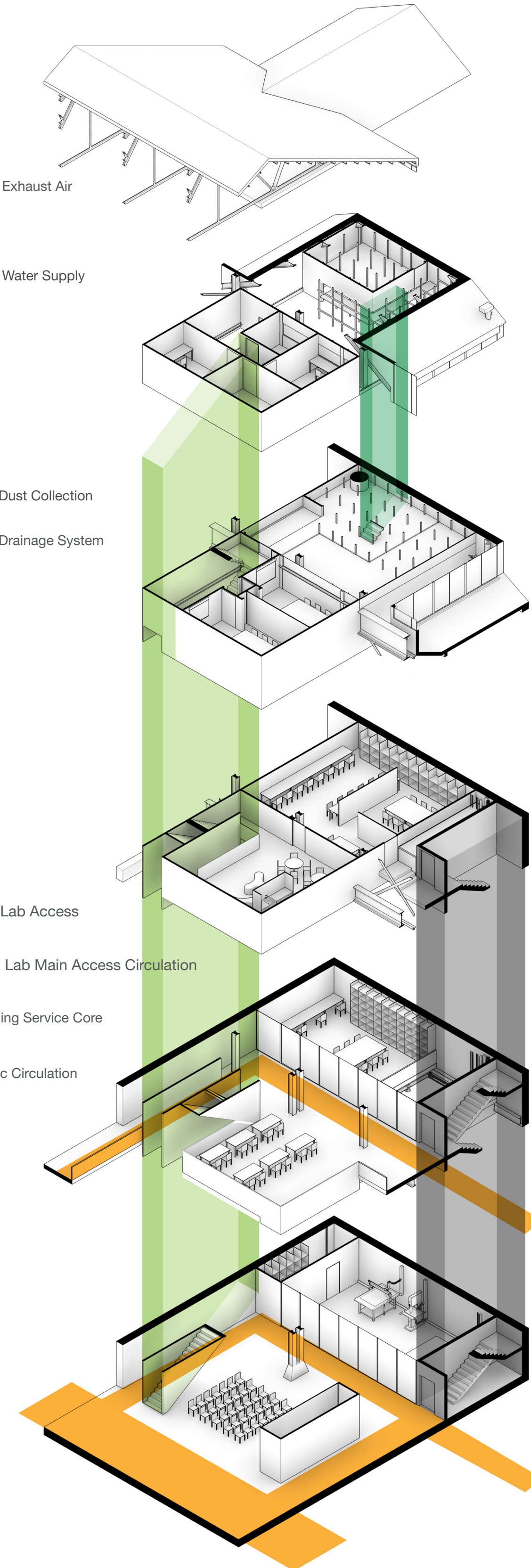
Fifth Floor Plan



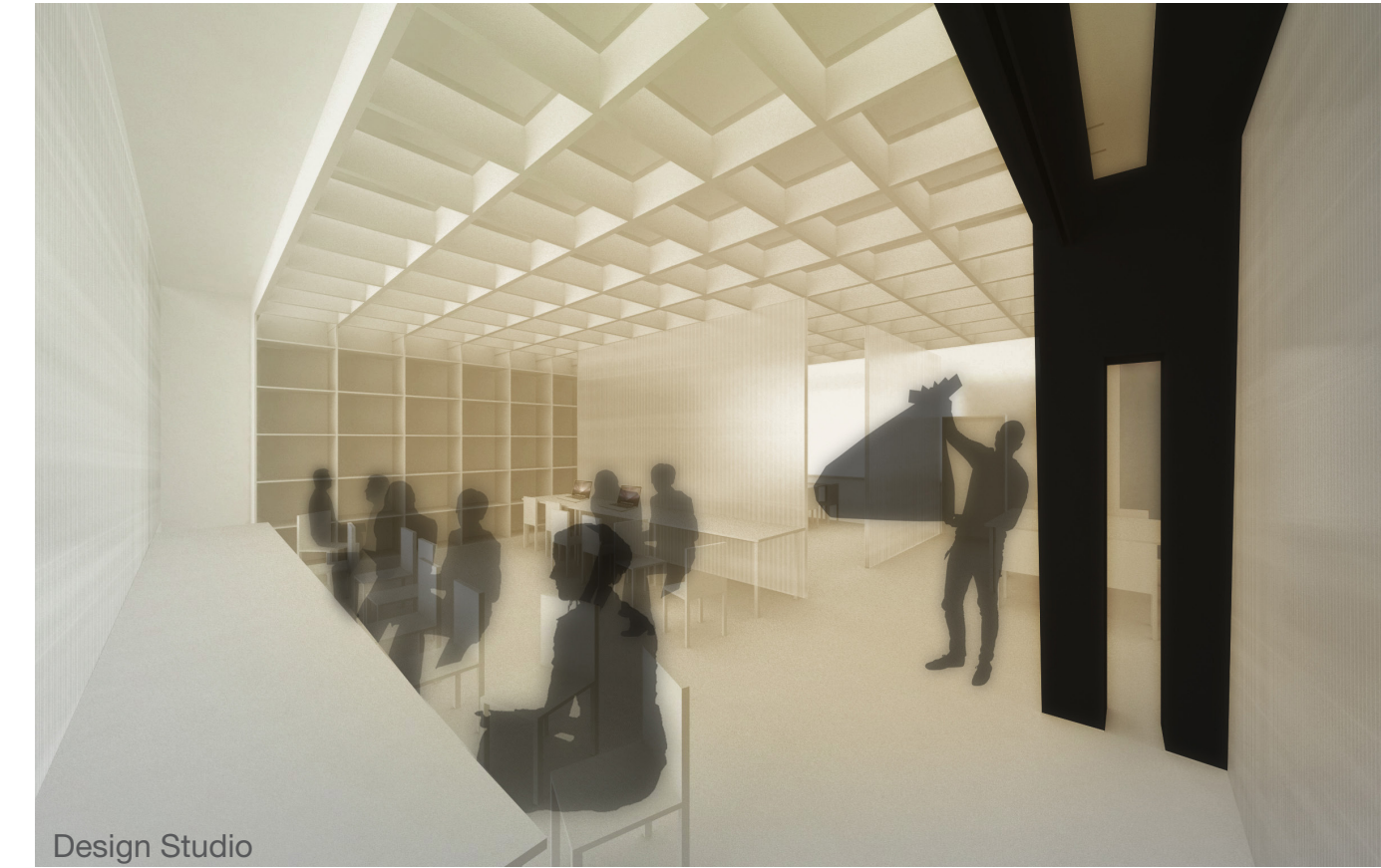
Overall Circulation Diagram



- Bio-Lab Access
- ONE Lab Main Access Circulation
- Building Service Core
- Public Circulation



Meeting Room



Design Studio



Lounge Area



3d printer workshop



Main Workshop

Roof Garden

A roof garden will propel OneLab's reasearch in the field of biology and also provide a calming atmosphere for recreational purposal.

