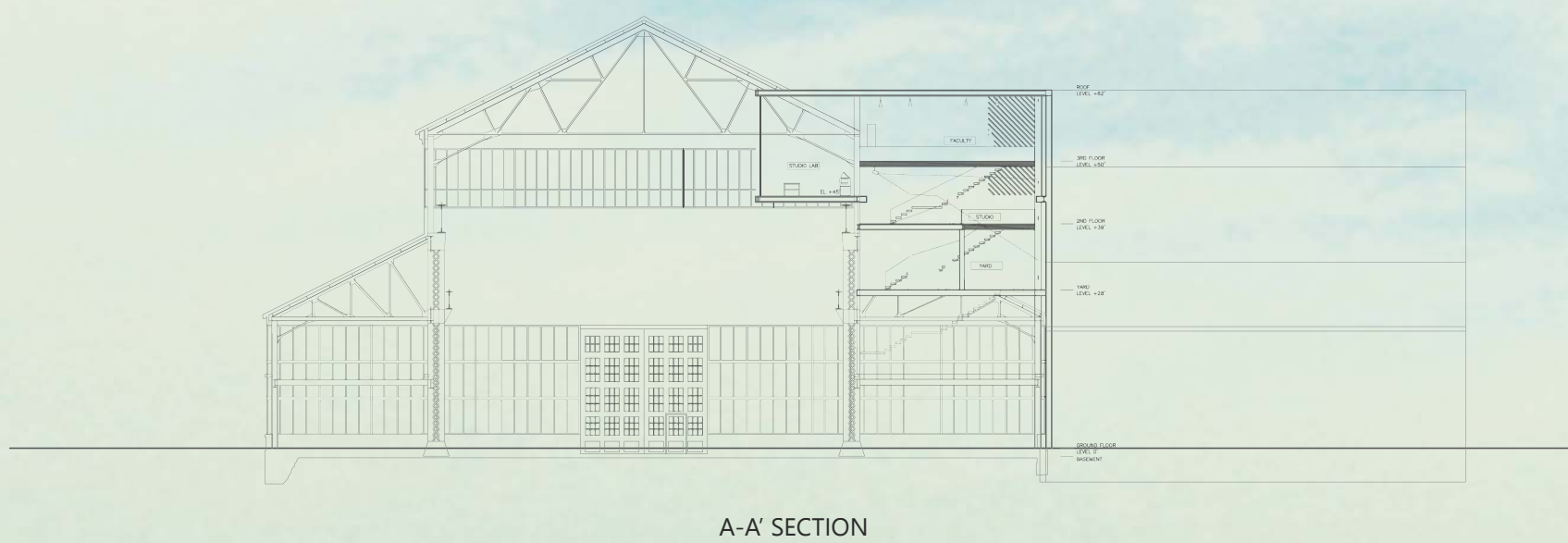


COL-LAB

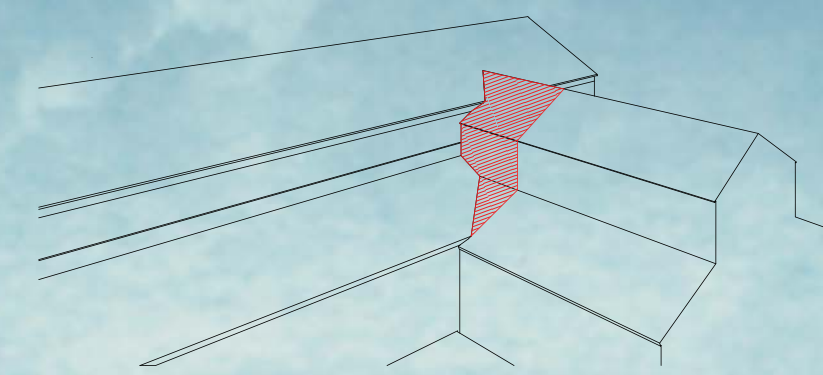
The proposed building for ONE Lab Educational Facilities at the Brooklyn Navy Yard is intended to suggest an approach that satisfies both ONE Lab members and the members of NEW Lab community. By fully utilizing its unique shape of the BKNY roof, a solid architectural body which provides space for ONE Lab program is placed at the upper part of the building, penetrating into the main part of Navy Yard. The lower part, where the entrance is located, is provided to the public (NEW Lab community) along with the roof on southeast side. As a result, the upper body works as 'House' for ONE Lab members' convenience and the lower part, both outside and inside, serves as 'Yard' for the community of NEW Lab, where various activities and collaborative works can take place to create synergy effect of ongoing ONE Lab projects. The working space and studio are placed on a set of floors from the entrance floor to the very top of floating mass to provide connection between 'House' and 'Yard'.

Overall shape of the building looks like a house floating on the yard and also provides strong presence when seeing from NEW Lab community. One Lab's purpose to create collaborations among various fields will be able to expand its influence to NEW Lab and even further with the Yard on the roof of BKNY. The Yard will gather the people interested in the projects and the set of floors connecting the House and Yard will provide enough space for new and fresh collaborations. With a number of alternations for the roof shape and its program, ONE Lab can create unique space considering the characteristic of their project.

The structure of the building is extended from existing columns and beams with some additional braces and beams. The outside Yard located above the roof of BKNY will be reinforced with additional truss and beams to support the load from various alternations of Yard. Considering the advantage of steel structure, the Yard will be transformable on demand of ONE Lab projects.

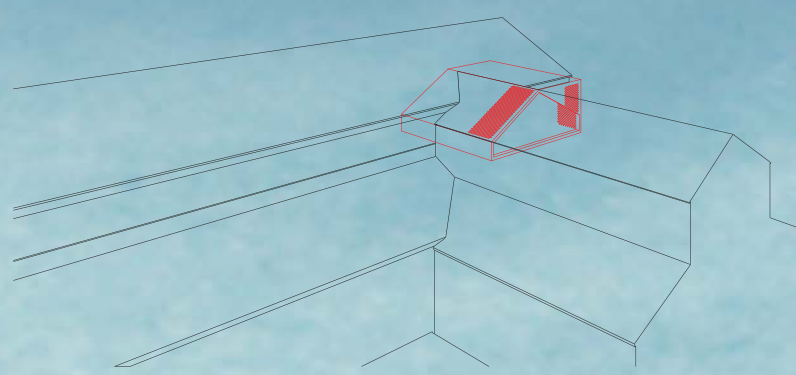
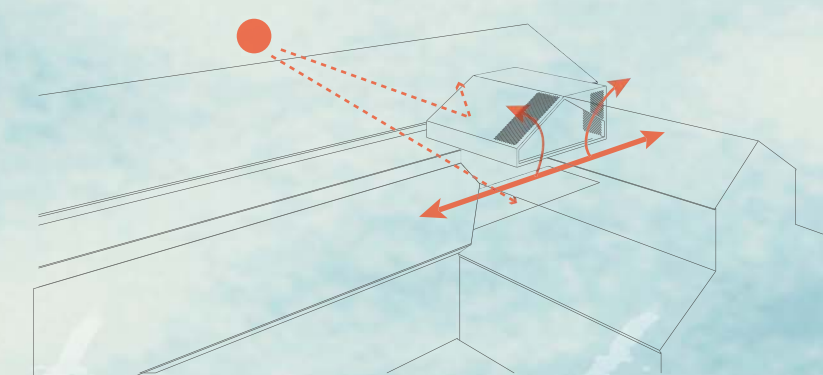


CONCEPT



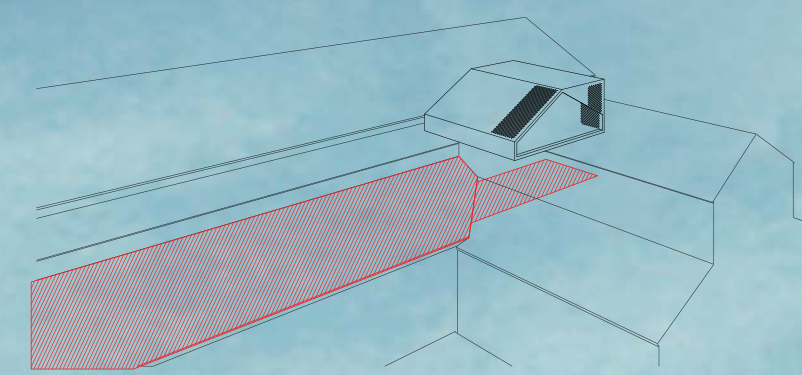
CURRENT CONDITION

Located between two sloped roofs and provides unique shape.



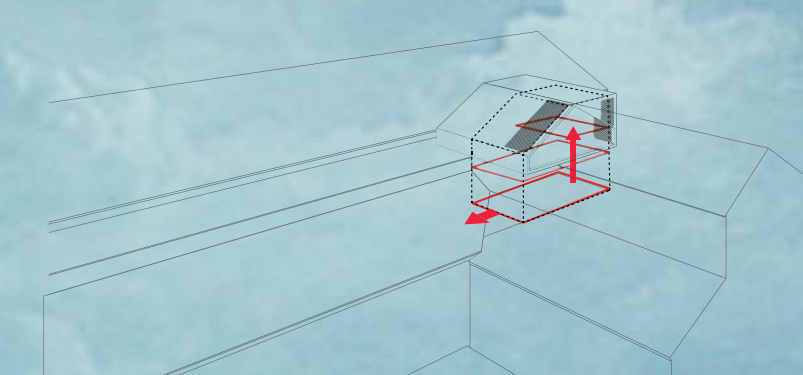
SOLID MASS(HOUSE) FOR ONE LAB

A solid mass expanded from original shape of roof penetrates into the main building to create additional space for ONE Lab members.



TRANSFORMABLE SPACE FOR PUBLIC

Including the first floor of given boundary, the 'Yard' is expanded to the roof top of BKNY and will provide various alternations considering the surrounding conditions or characteristic of ongoing projects.

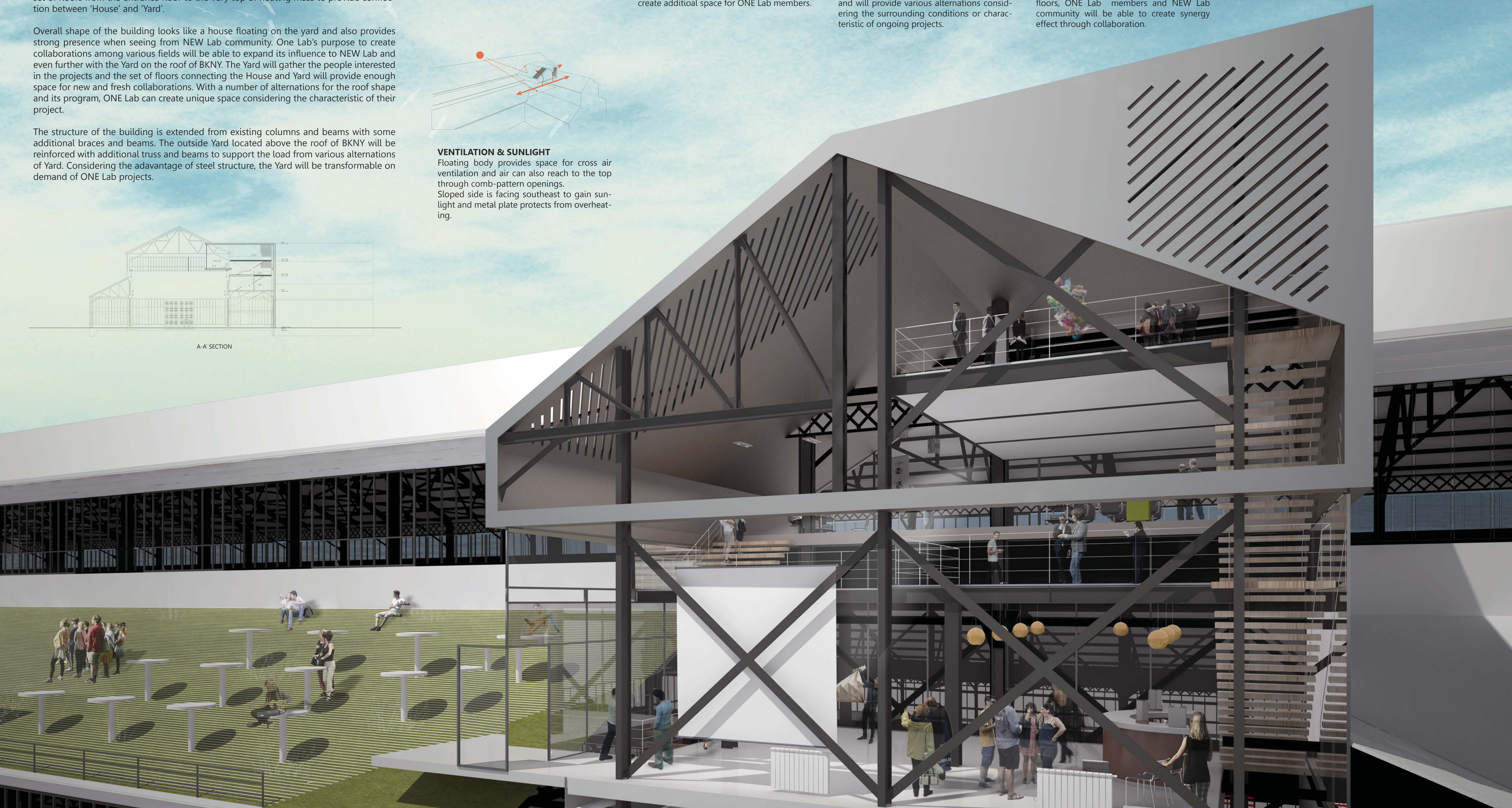


FLOORS CONNECTING HOUSE AND YARD

Three floors stretched from first floor to very top will connect the House and Yard. On the floors, ONE Lab members and NEW Lab community will be able to create synergy effect through collaboration.

VENTILATION & SUNLIGHT

Floating body provides space for cross air ventilation and air can also reach to the top through comb-pattern openings. Sloped side is facing southeast to gain sunlight and metal plate protects from overheating.





FIRST FLOOR_ 1160 sf
Kitchen
Lounge
Inside Yard
Presentation & Exhibition

OUTSIDE YARD_ 4040 sf
Presentation & Exhibition
Studio

SECONDE FLOOR_ 830 sf
Studio

THRID FLOOR_ 960 sf
Studio
LAB
Pin-up

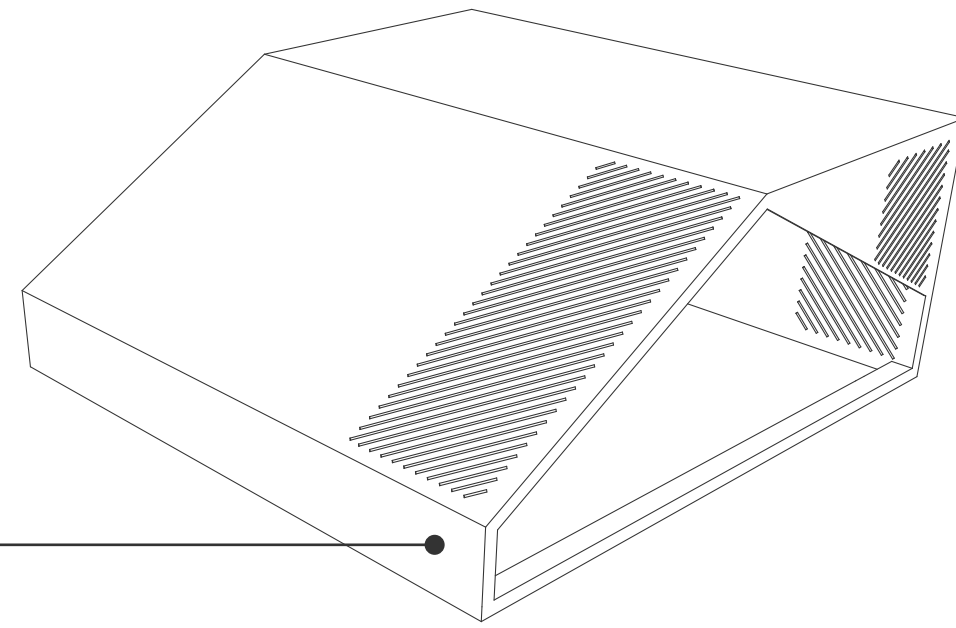
FOURTH FLOOR_ 490 sf
Faculty



B-B' SECTION

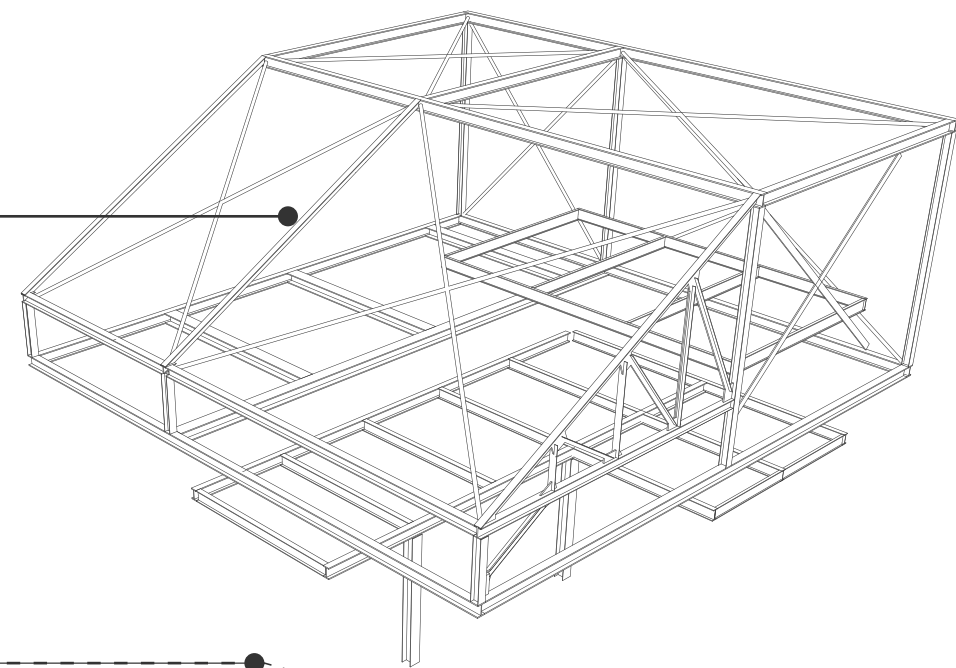
Metal Plate Cap

Sloped side is placed towards southeast direction for sunlight.
Avoid overheating by using shiny metal plate and Comb pattern openings will prevent from direct sunlight.



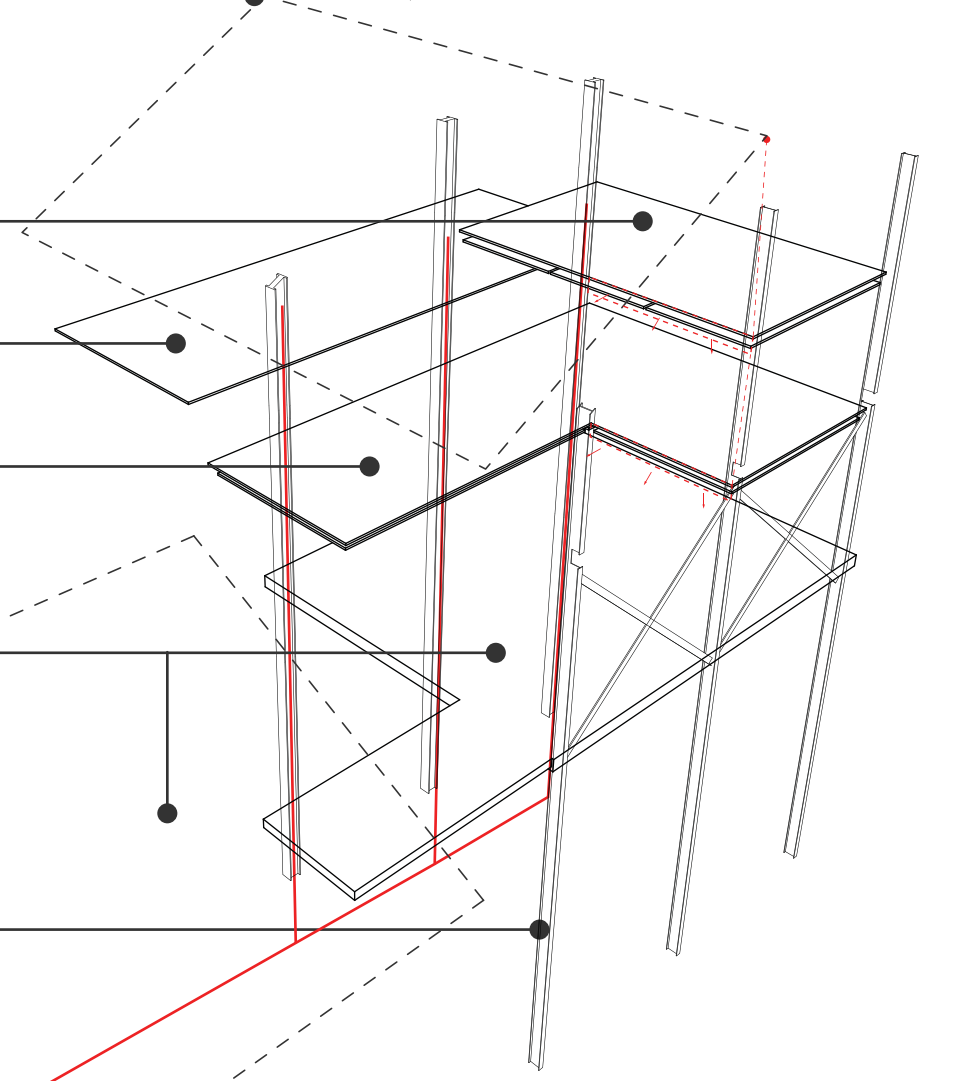
Added Structure

Support metal plate cap and slabs.



Sloped Acoustic Ceiling

Sloped ceiling will naturally provide good acoustic condition from bottom to top.



Faculty Floor (4F)

Studio & Lab (3F)

Studio (2F)

Yard (1F)

Extended from inside to outside, provides various space through alternations for ONE Lab members and NEW Lab community.

Existing Structures

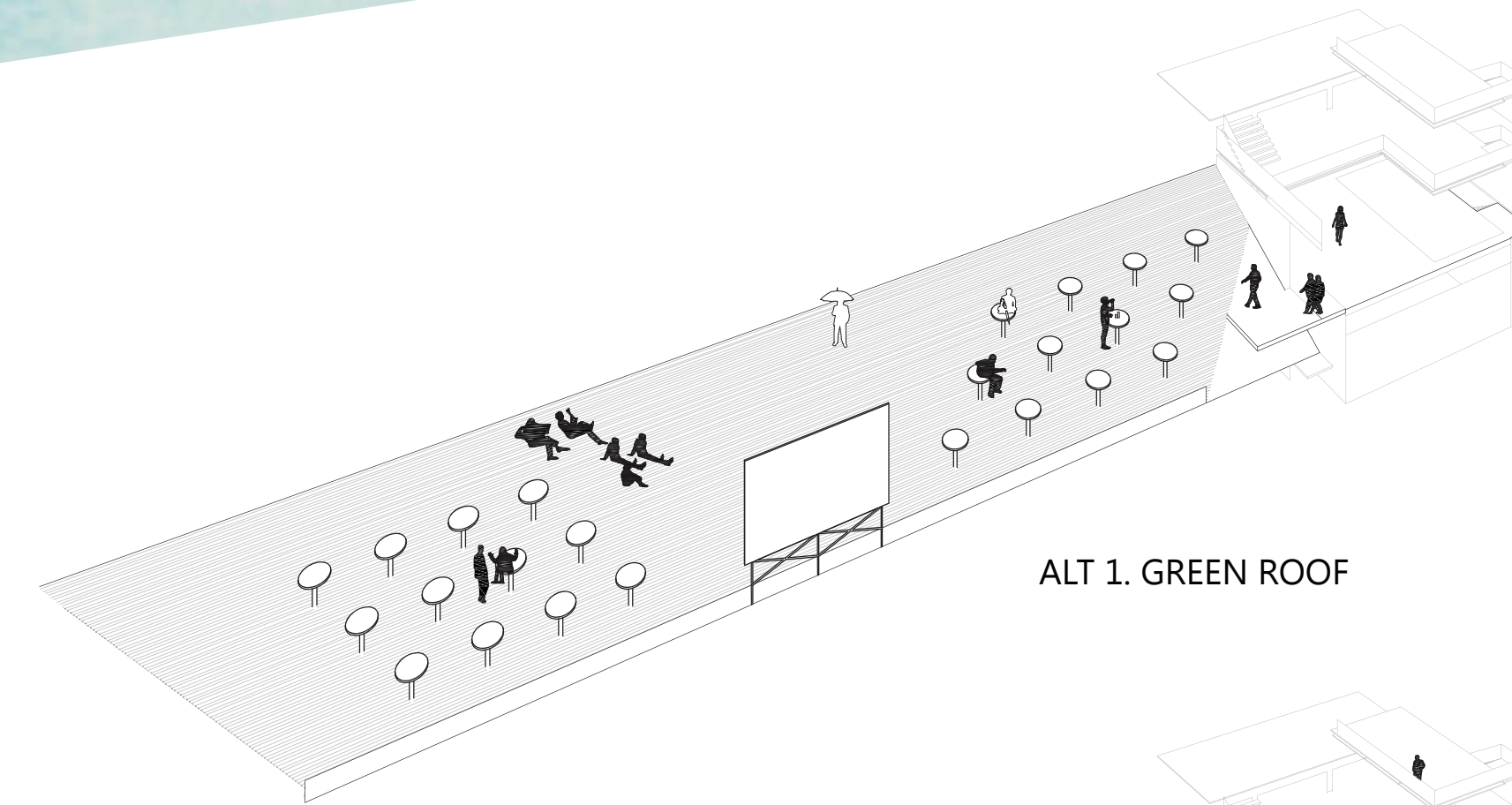
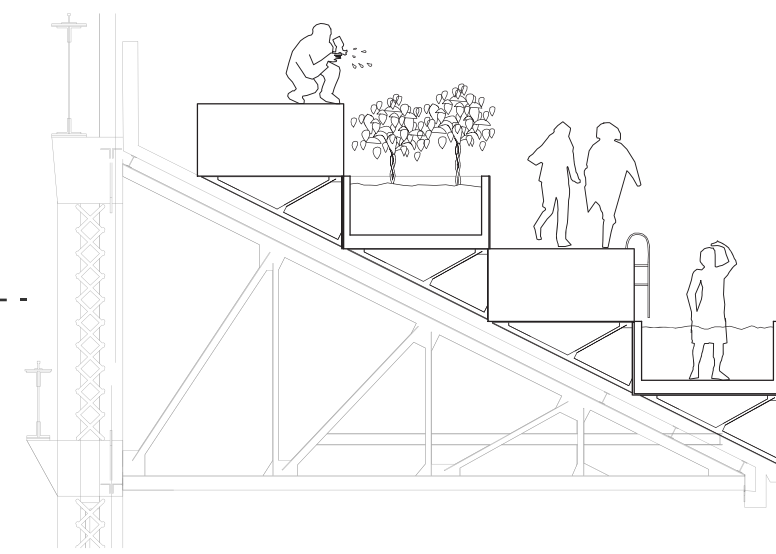
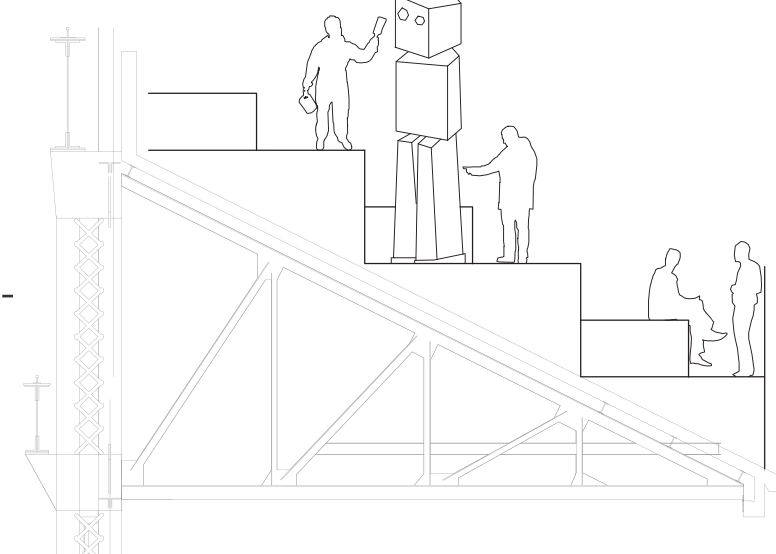
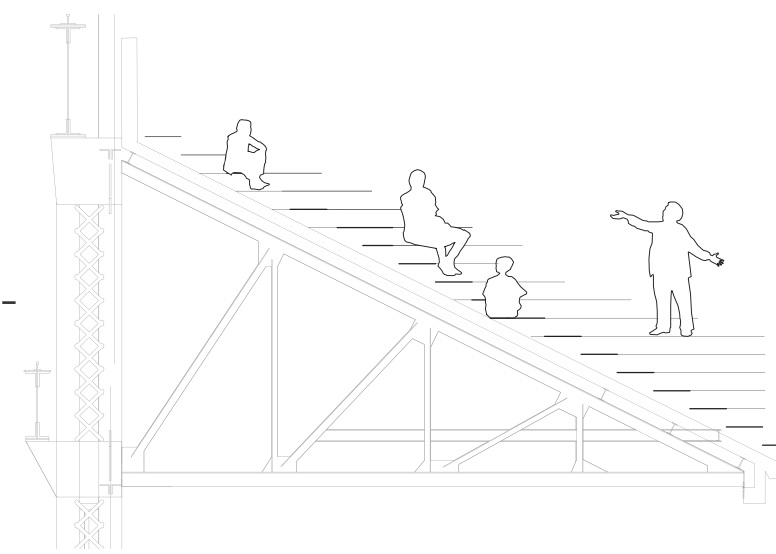
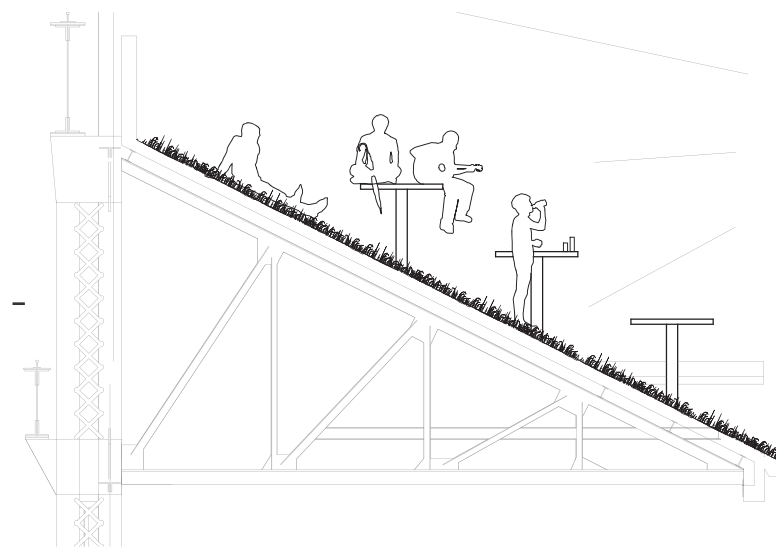
Existing columns extended to hold entire building and works as core for electricity.

Electric Power Supply

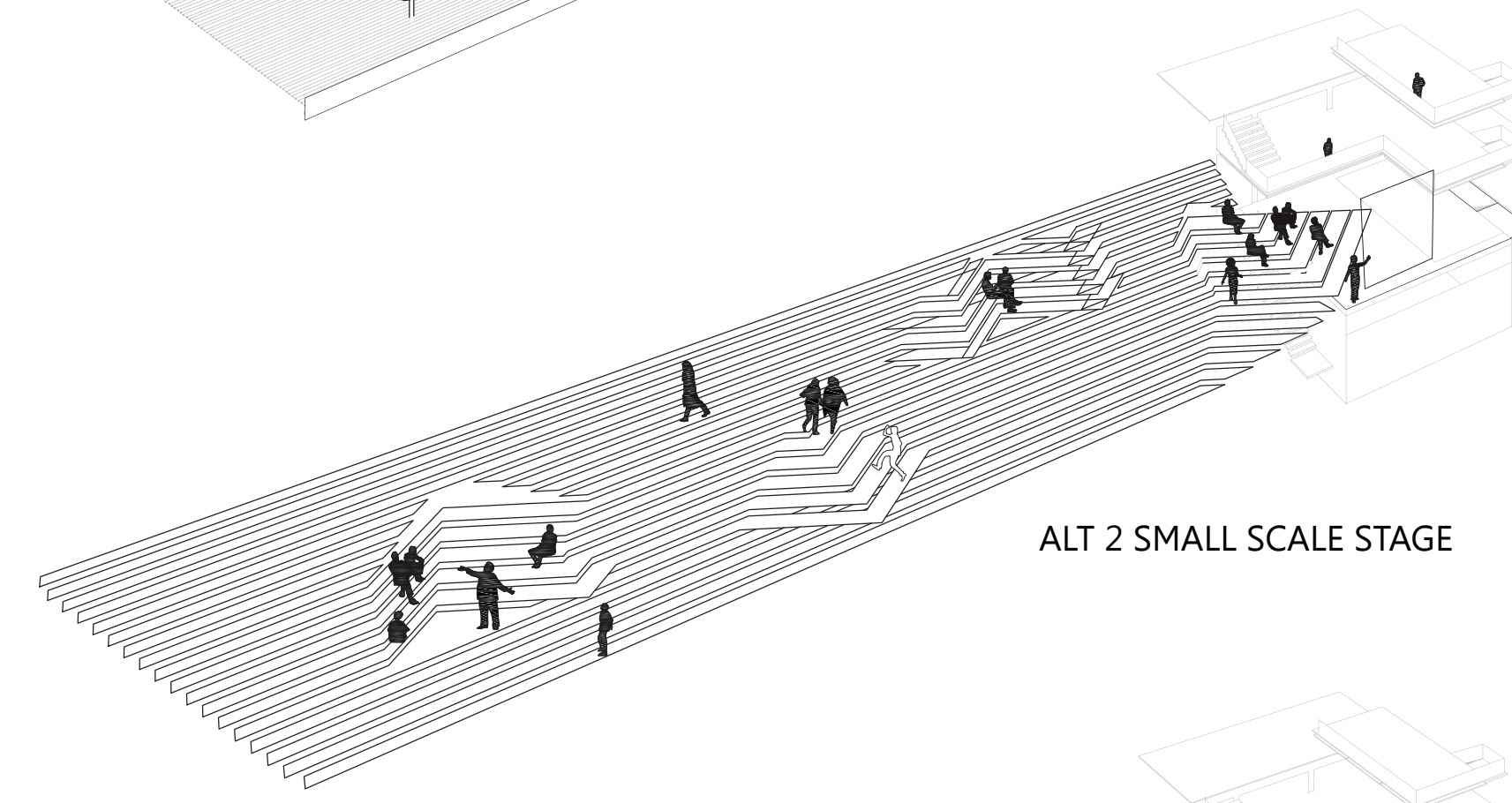
Installed along with existing structure since it stretch from bottom to top as core structure.

Yard Alternations

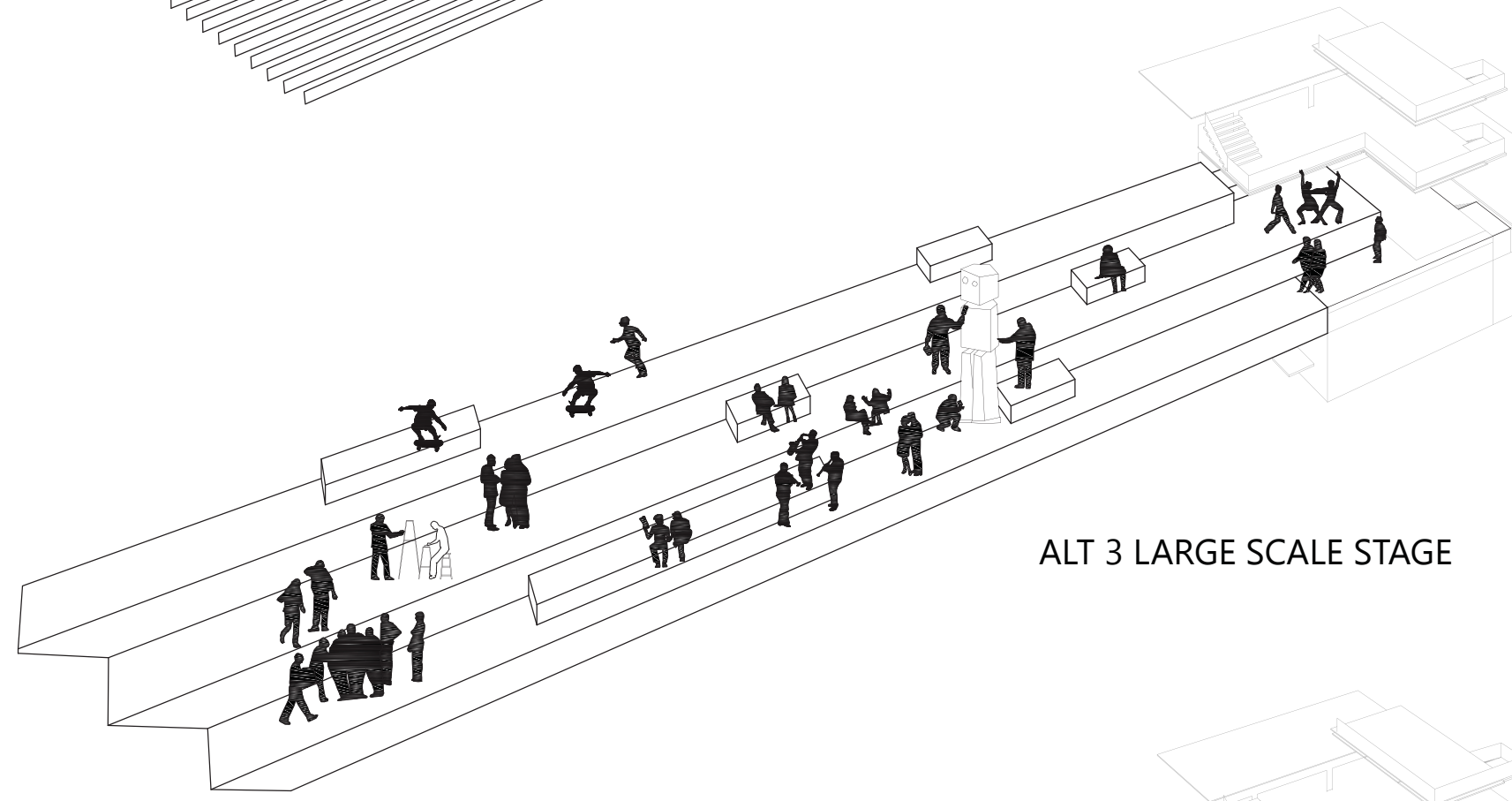
Using existing sloped roof, not only ONE Lab members but also NEW Lab community will have chances to share and collaborate their ideas on transformable roof. Following alternations can provide different activities in different condition.



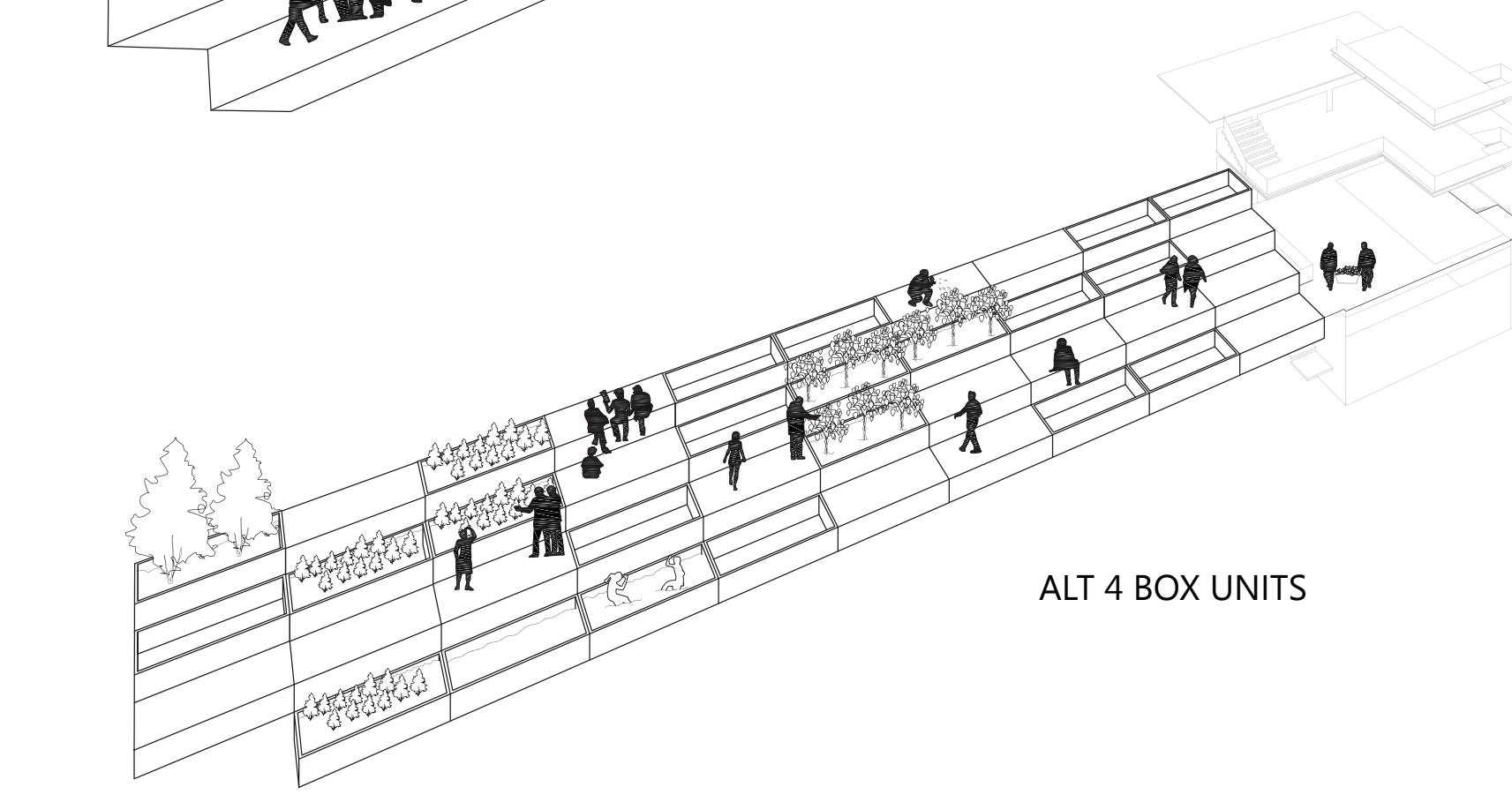
ALT 1. GREEN ROOF



ALT 2 SMALL SCALE STAGE



ALT 3 LARGE SCALE STAGE



ALT 4 BOX UNITS

